

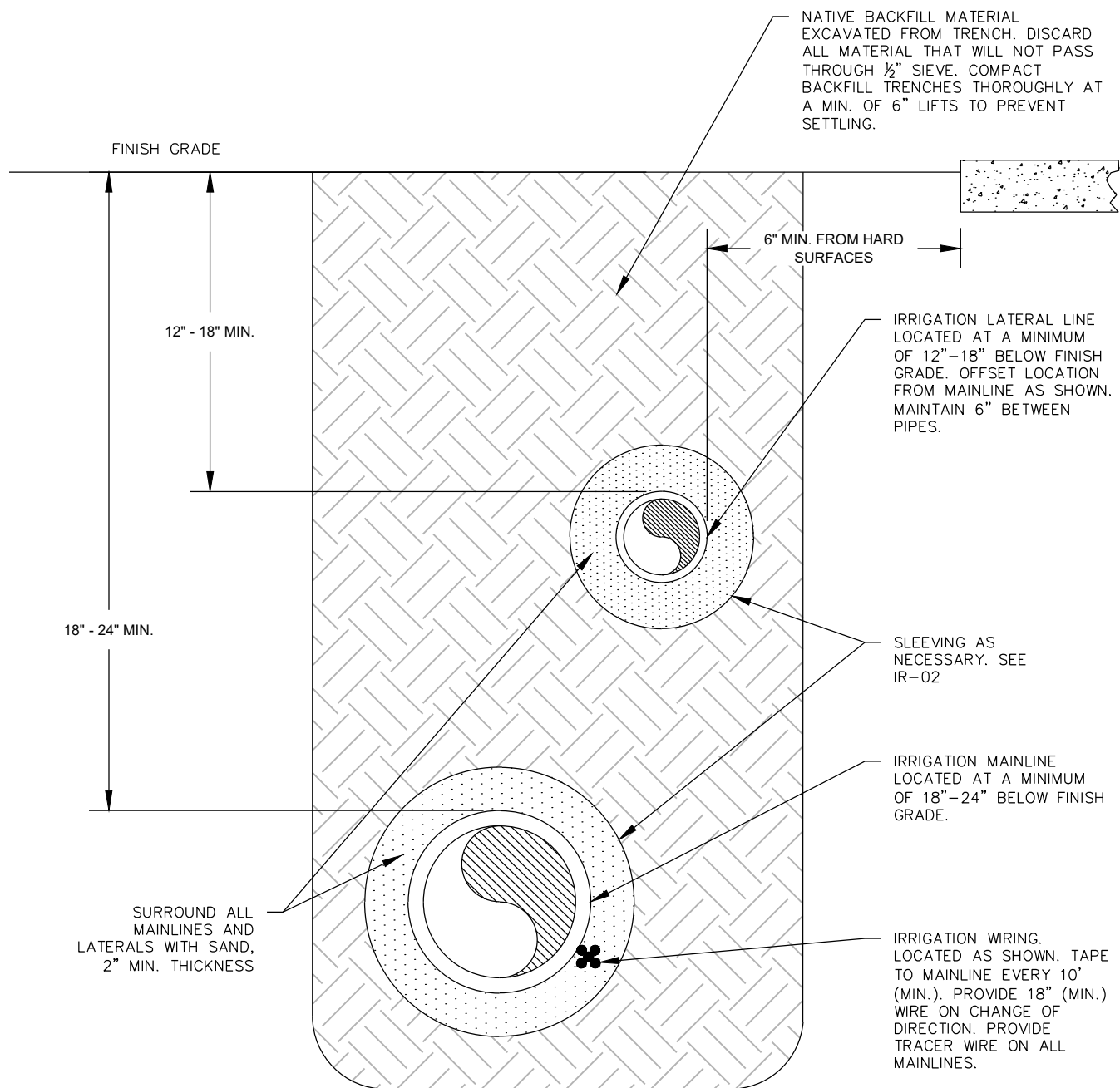
IRRIGATION SYSTEMS STANDARD DETAILS

INDEX:

<i>TYPICAL TRENCH DETAIL.....</i>	<i>IR-01</i>
<i>PIPE SLEEVING DETAIL.....</i>	<i>IR-02</i>
<i>TYPICAL CONNECTION ASSEMBLY DIAGRAM.....</i>	<i>IR-03</i>
<i>STOP & WASTE VALVE.....</i>	<i>IR-04</i>
<i>HYDROMETER.....</i>	<i>IR-05</i>
<i>QUICK COUPLING VALVE.....</i>	<i>IR-06</i>
<i>ISOLATION SHUT-OFF VALVE.....</i>	<i>IR-07</i>
<i>AUTOMATIC CONTROL VALVE.....</i>	<i>IR-08</i>
<i>AUTOMATIC CONTROL DRIP VALVE.....</i>	<i>IR-09</i>
<i>POP-UP ROTOR HEAD.....</i>	<i>IR-10</i>
<i>POP-UP SPRAY HEAD.....</i>	<i>IR-11</i>
<i>BUBBLER.....</i>	<i>IR-12</i>
<i>IN-LINE DRIP GRID LAYOUT.....</i>	<i>IR-13</i>
<i>PVC TO POLY TUBING CONNECTION.....</i>	<i>IR-14</i>
<i>DRIP POINT SOURCE EMITTER.....</i>	<i>IR-15</i>
<i>EMITTER INTO POLY-TUBE.....</i>	<i>IR-16</i>
<i>WALL MOUNT CONTROLLER.....</i>	<i>IR-17</i>
<i>PEDESTAL MOUNT CONTROLLER.....</i>	<i>IR-18</i>
<i>CONTROLLER METER ENCLOSURE.....</i>	<i>IR-19</i>
<i>WIRE SPLICE DETAIL.....</i>	<i>IR-20</i>

1	APPROVED BY C.C.		DEC. 2025		<u>IRRIGATION SYSTEMS STANDARD DETAILS</u>	IR-00
NO.	AUTHORIZED BY	REVISIONS	DATE			

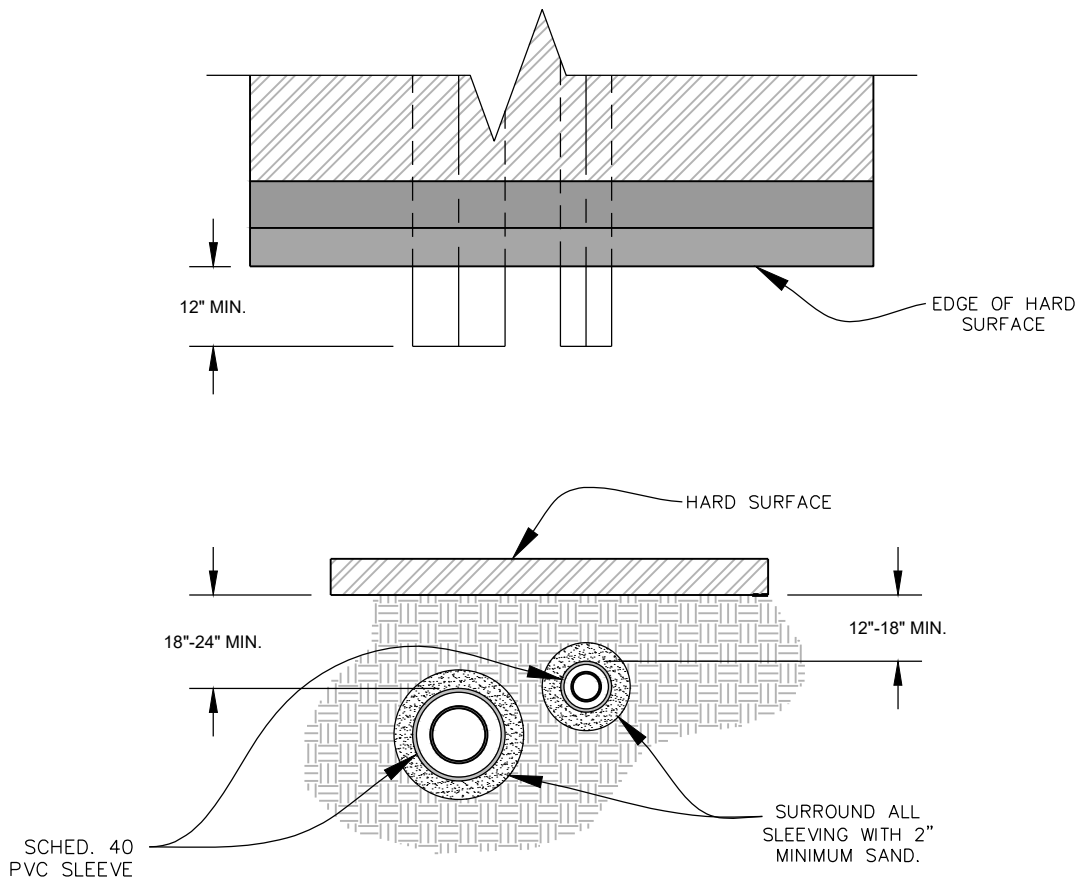
N:\Engineering\General Documents\Irrigation Systems Standard Details\IR-01 TYPICAL TRENCH DETAIL.dwg, 12/9/2025 9:51:08 AM



NOTE:

ALL IRRIGATION LINES 2 1/2" AND GREATER SHALL BE INSTALLED WITH THRUST BLOCKS OR MECHANICAL JOINT RESTRAINT FITTINGS WHEREVER A CHANGE OF DIRECTION OCCURS.

1	APPROVED BY C.C.		DEC. 2025		TYPICAL TRENCH DETAIL	IR-01
NO.	AUTHORIZED BY	REVISIONS	DATE			



WIRE CONDUIT SIZES – 14 GAUGE

NUMBER OF WIRES	MIN. CONDUIT SIZE
1–4	3/4"
5–7	1"
8–11	1 1/2"
12–22	2"
23–31	2 1/2"
32–36	3"

*WIRES SHALL BE IN SEPARATE CONDUIT FROM PIPE.
SIZE PER CHART ABOVE.

SLEEVE SIZE CHART

PIPE SIZE	MIN. SLEEVE SIZE
3/4"	1 1/2"
1"	2"
1 1/4"	2 1/2"
1 1/2"	2 1/2"
2"	3"
2 1/2"	4"
3"	4"
4"	6"
6"	8"

*WHEN MULTIPLE PIPES OCCUR IN ONE
TRENCH, ADD REQUIRED SLEEVE SIZES
TOGETHER FOR 1 SLEEVE SIZE

NOTES

1. NO TEES OR ELBOWS SHALL BE PLACED IN SLEEVES.
2. TRACER WIRE REQUIRED UNDER ALL MAINS.
3. SLEEVE LOCATIONS SHALL BE MARKED WITH 36" REBAR OR PERMANENT MARKING ON CONCRETE.

1 APPROVED BY C.C. DEC. 2025

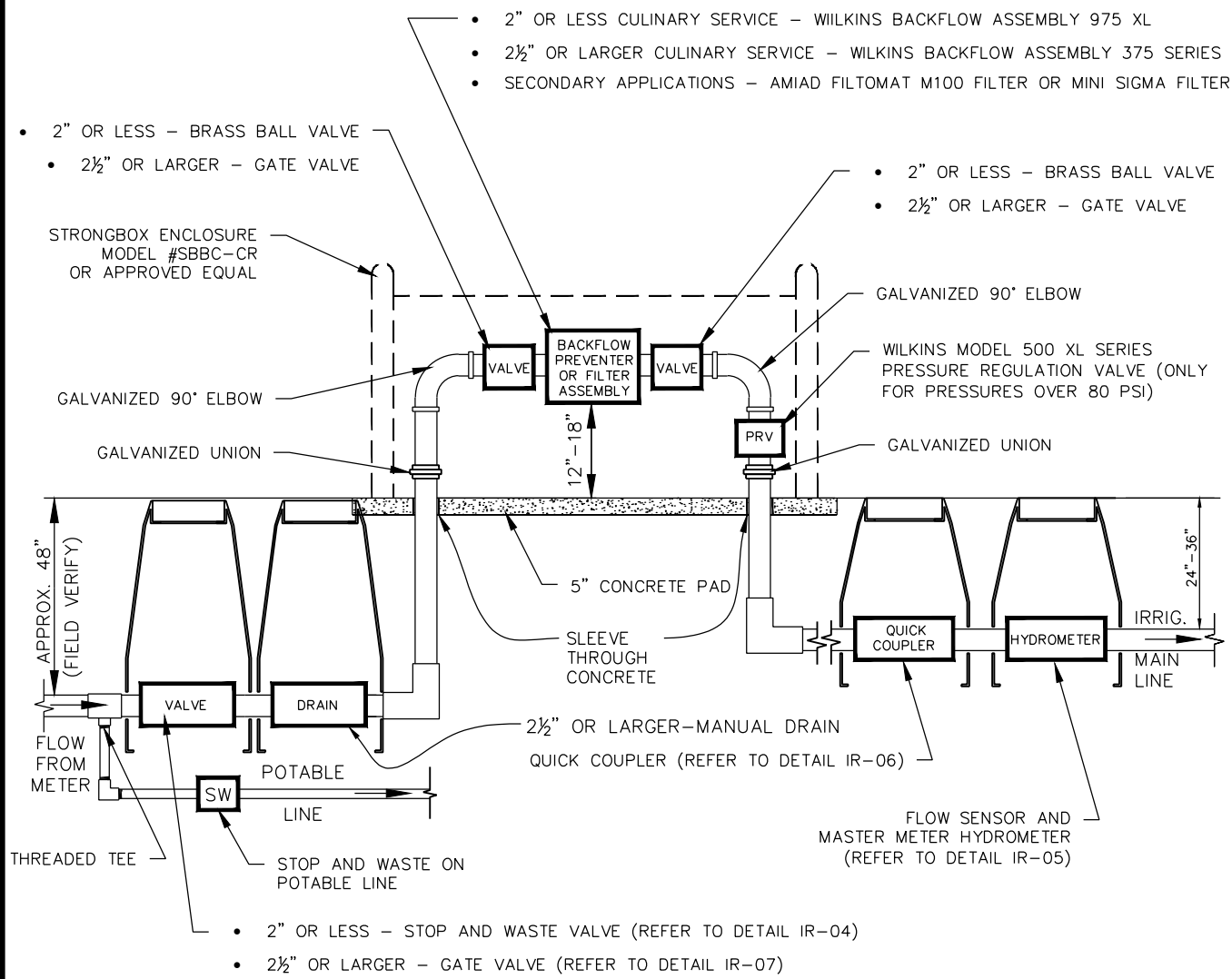


**PIPE
SLEEVING
DETAIL**

IR-02

NO. AUTHORIZED BY REVISIONS DATE

N:\Engineering\General Documents\Irrigation Systems Standard Details\IR-03 TYPICAL CONNECTION ASSEMBLY DIAGRAM.dwg, 12/9/2025 9:55:26 AM

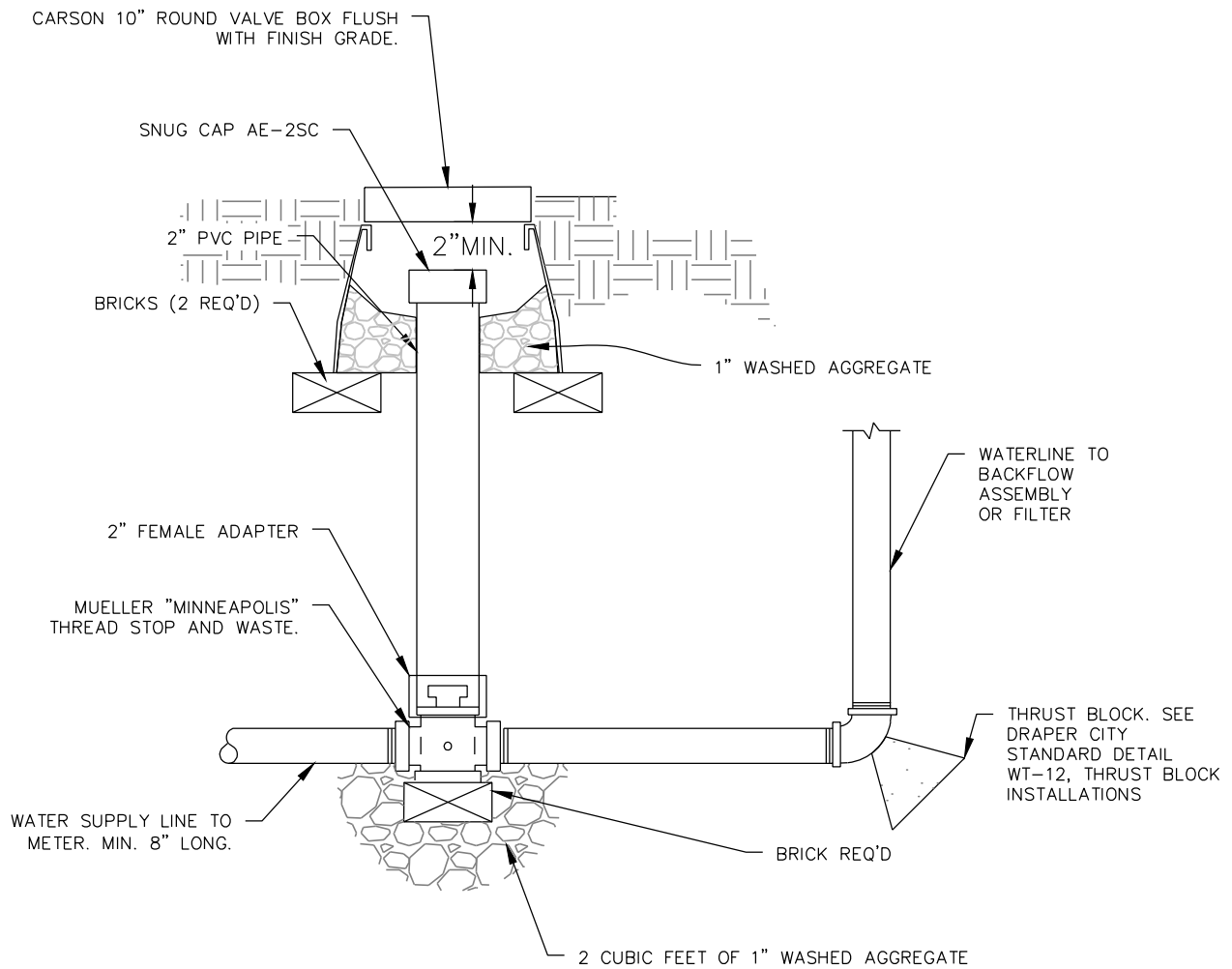


NOTES:

1. PIPE AND FITTINGS PER CITY SPECIFICATIONS
2. BACKFLOW PREVENTER SHALL BE TESTED BY CERTIFIED TESTER PRIOR TO APPROVAL
3. METER BOX TO BE INSTALLED PER WATER PROVIDER'S STANDARDS AND SPECIFICATIONS

1	APPROVED BY C.C.		DEC. 2025		TYPICAL CONNECTION ASSEMBLY DIAGRAM	IR-03
NO.	AUTHORIZED BY	REVISIONS	DATE			

N:\Engineering\General Documents\Irrigation Systems Standard Details\IR-04 STOP & WASTE VALVE.dwg, 12/9/2025 9:56:41 AM

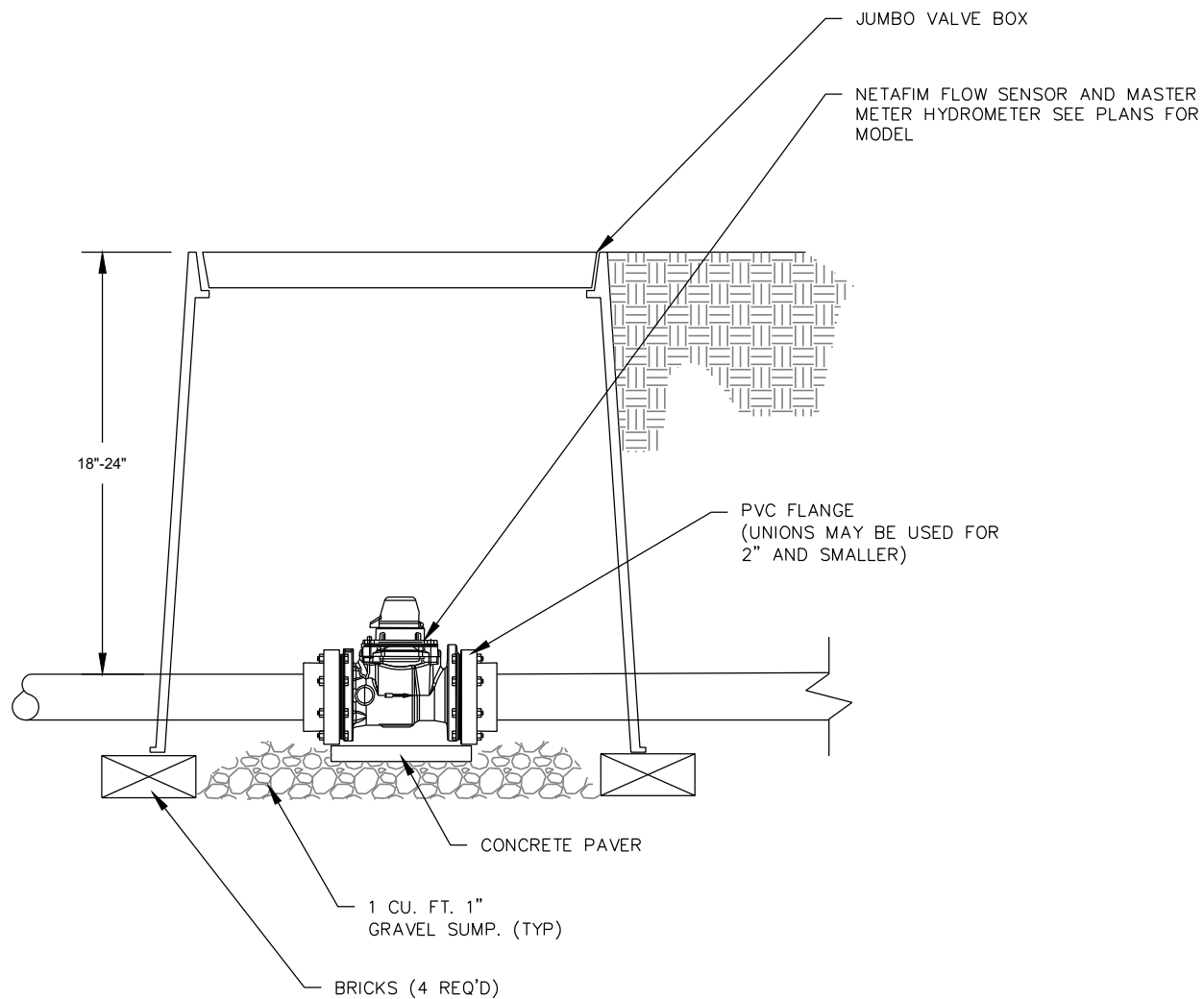


NOTE:

ALL PIPE & FITTINGS TO BE BRASS UP TO MASTER VALVE

1	APPROVED BY C.C.		DEC. 2025		<u>STOP & WASTE VALVE</u>	IR-04
NO.	AUTHORIZED BY	REVISIONS	DATE			

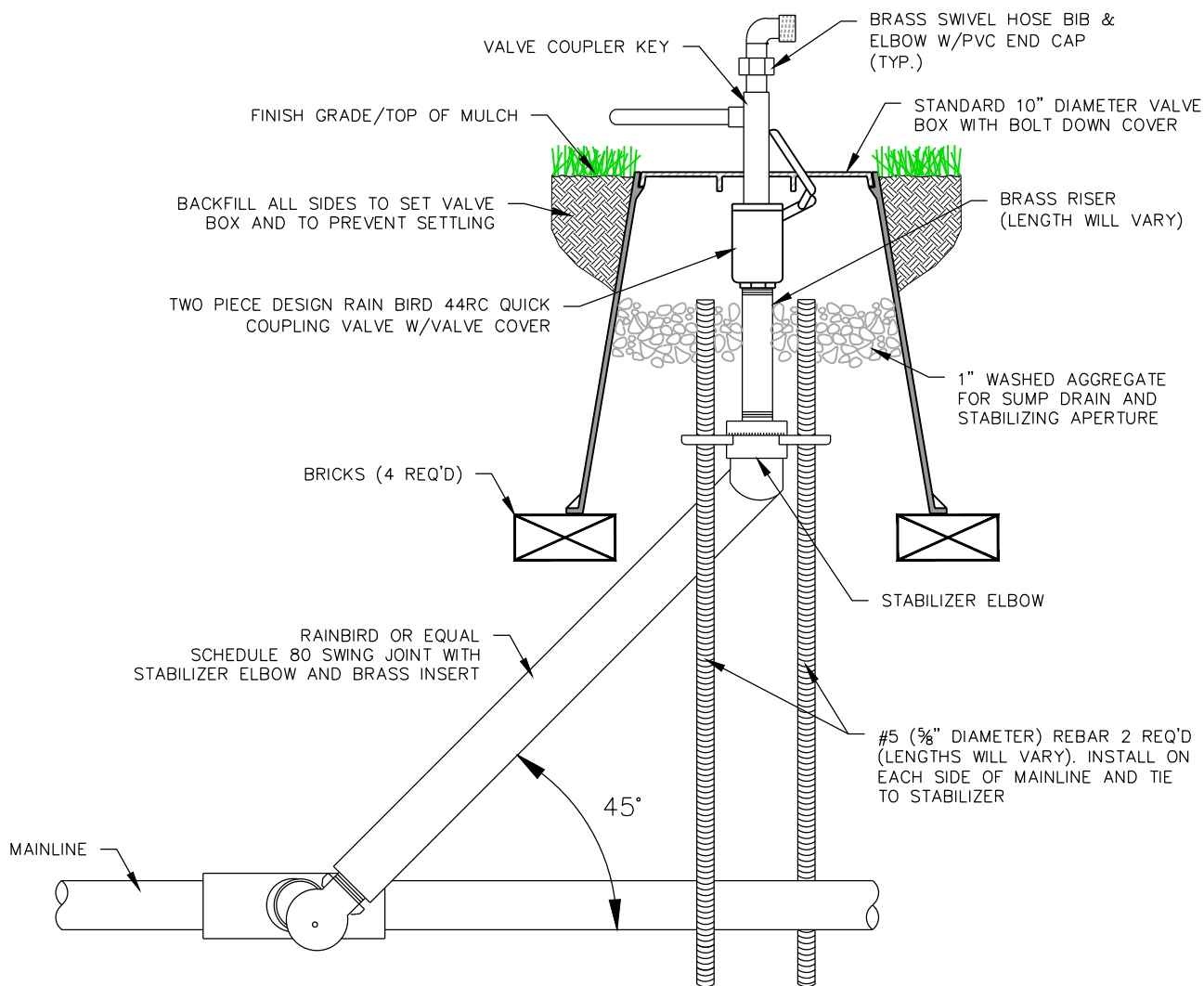
N:\Engineering\General Documents\Irrigation Systems Standard Details\IR-05 HYDROMETER.dwg, 12/9/2025 9:58:18 AM



NOTE:

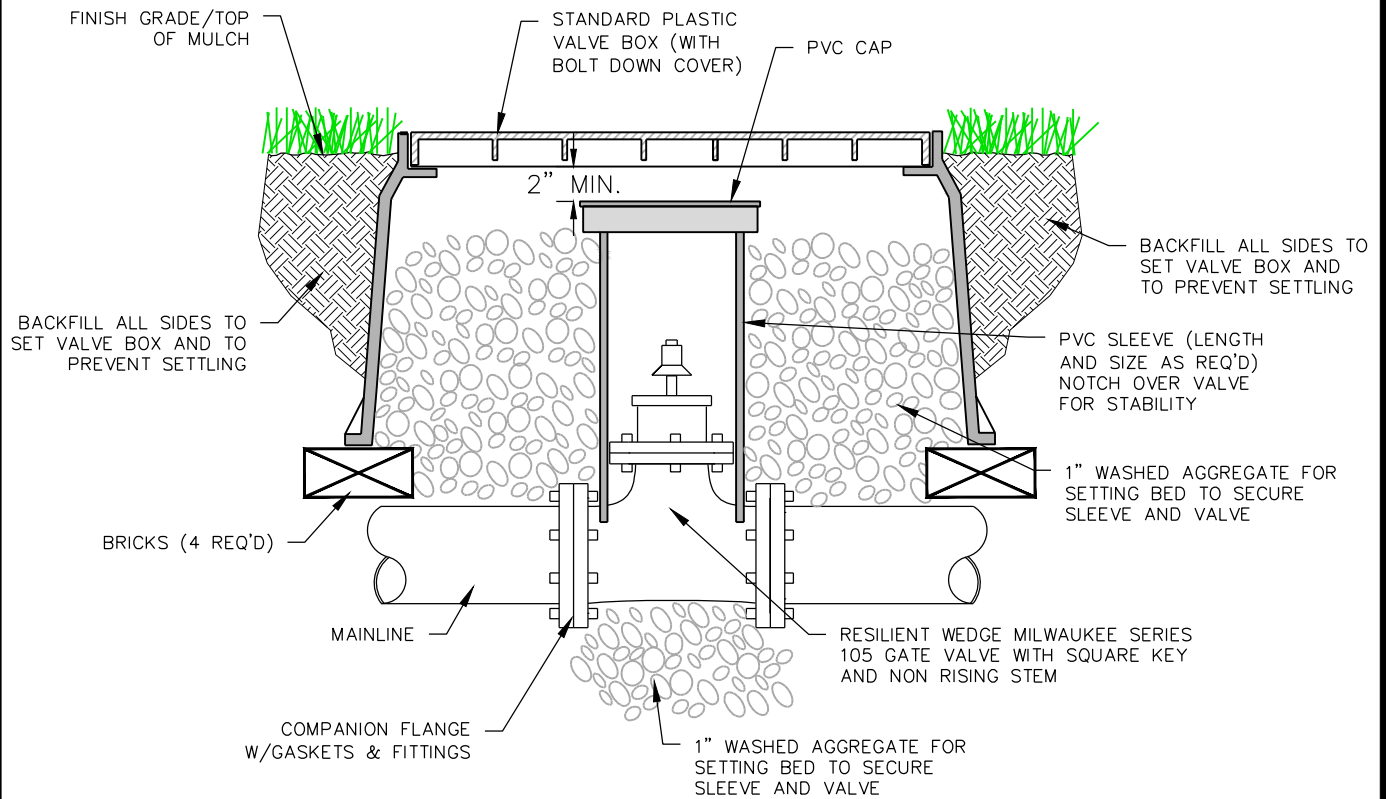
ALL VALVE BOXES TO BE FLUSH WITH FINISH GRADE

1	APPROVED BY C.C.		DEC. 2025		<u>HYDROMETER</u>	IR-05
NO.	AUTHORIZED BY	REVISIONS	DATE			



1	APPROVED BY C.C.		DEC. 2025		<u>QUICK COUPLING VALVE</u>	IR-06
NO.	AUTHORIZED BY	REVISIONS	DATE			

N:\Engineering\General Documents\Irrigation Systems Standard Details\IR-07 ISOLATION SHUT-OFF VALVE.dwg, 12/9/2025 10:01:55 AM

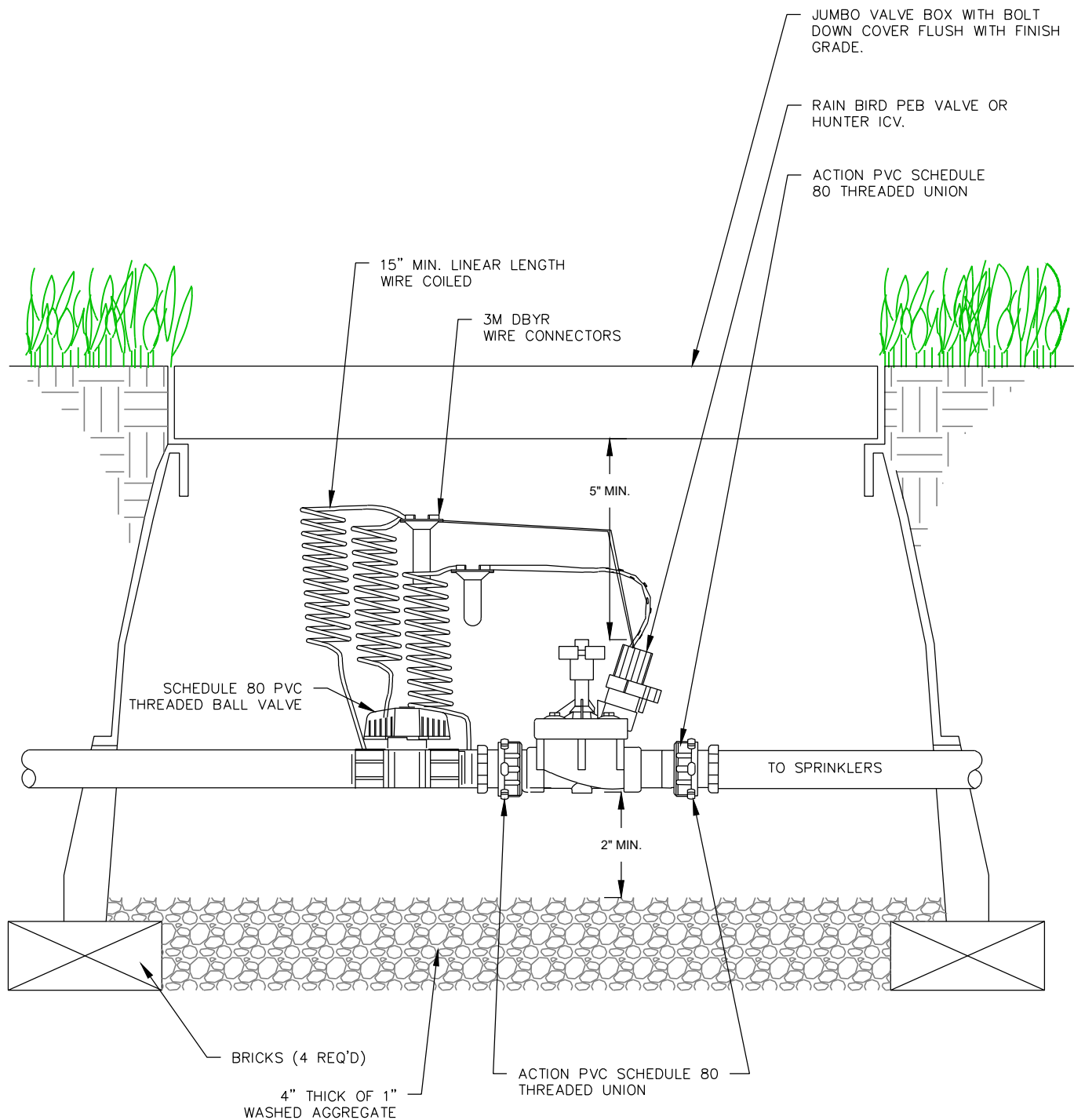


NOTE:

USE BALL VALVE ON PIPES 2" AND UNDER.

1	APPROVED BY C.C.		DEC. 2025		<u>ISOLATION SHUT-OFF VALVE</u>	IR-07
NO.	AUTHORIZED BY	REVISIONS	DATE			

N:\Engineering\General Documents\Irrigation Systems Standard Details\IR-08 AUTOMATIC CONTROL VALVE.dwg, 12/9/2025 10:03:26 AM

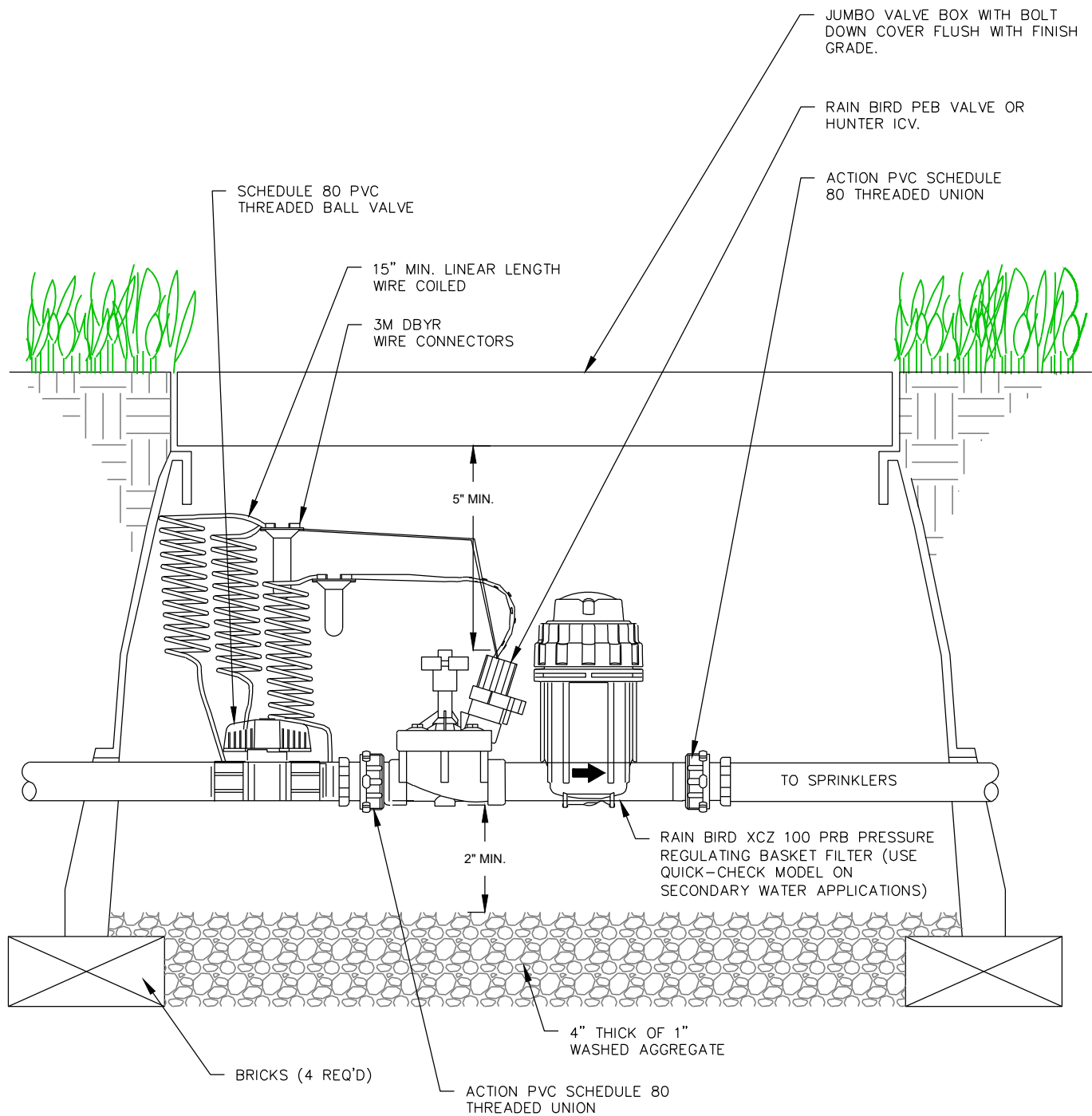


NOTES:

1. ALL MAINLINE FITTINGS TO BE SCHEDULE 80 AND OR HARCO
2. SCRUBBER MODELS REQUIRED FOR SECONDARY WATER APPLICATIONS

1	APPROVED BY C.C.		DEC. 2025		<u>AUTOMATIC</u> <u>CONTROL</u> <u>VALVE</u>	IR-08
NO.	AUTHORIZED BY	REVISIONS	DATE			

N:\Engineering\General Documents\Irrigation Systems Standard Details\IR-09 AUTOMATIC CONTROL DRIP VALVE.dwg, 12/9/2025 10:04:21 AM

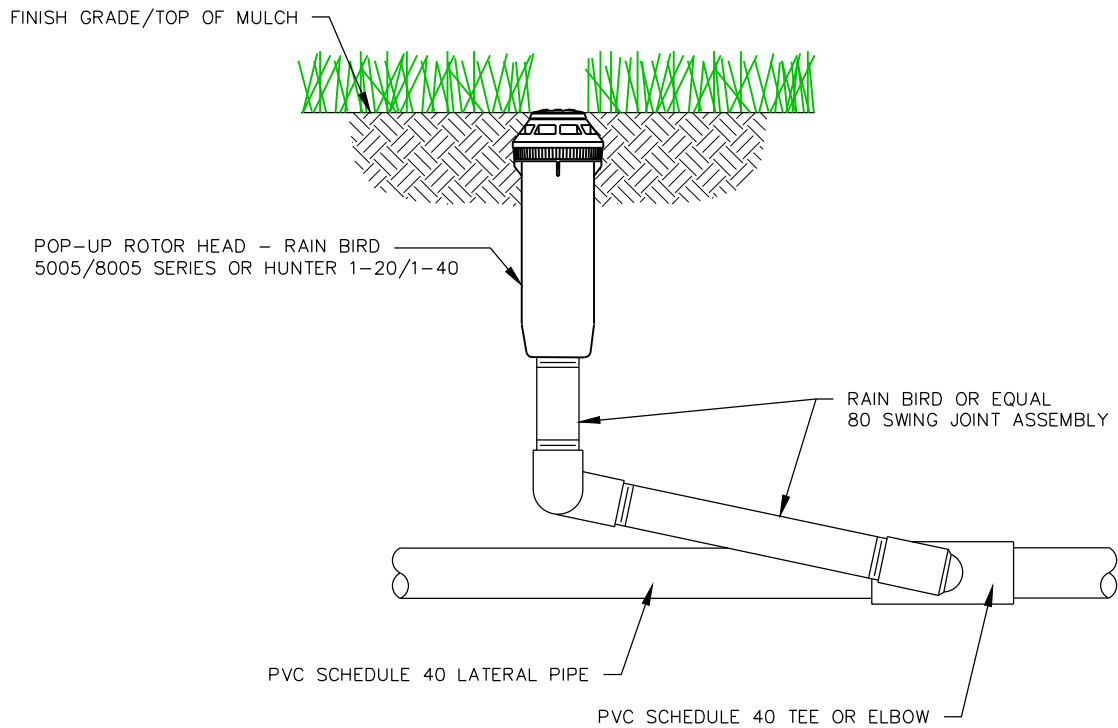


NOTES:

1. ALL MAINLINE FITTINGS TO BE SCHEDULE 80 AND OR HARCO
2. SCRUBBER MODELS REQUIRED FOR SECONDARY WATER APPLICATIONS

1	APPROVED BY C.C.		DEC. 2025		<u>AUTOMATIC CONTROL DRIP VALVE</u>	IR-09
NO.	AUTHORIZED BY	REVISIONS	DATE			

N:\Engineering\General Documents\Irrigation Systems Standard Details\IR-10 POP-UP ROTOR HEAD.dwg, 12/9/2025 10:10:03 AM

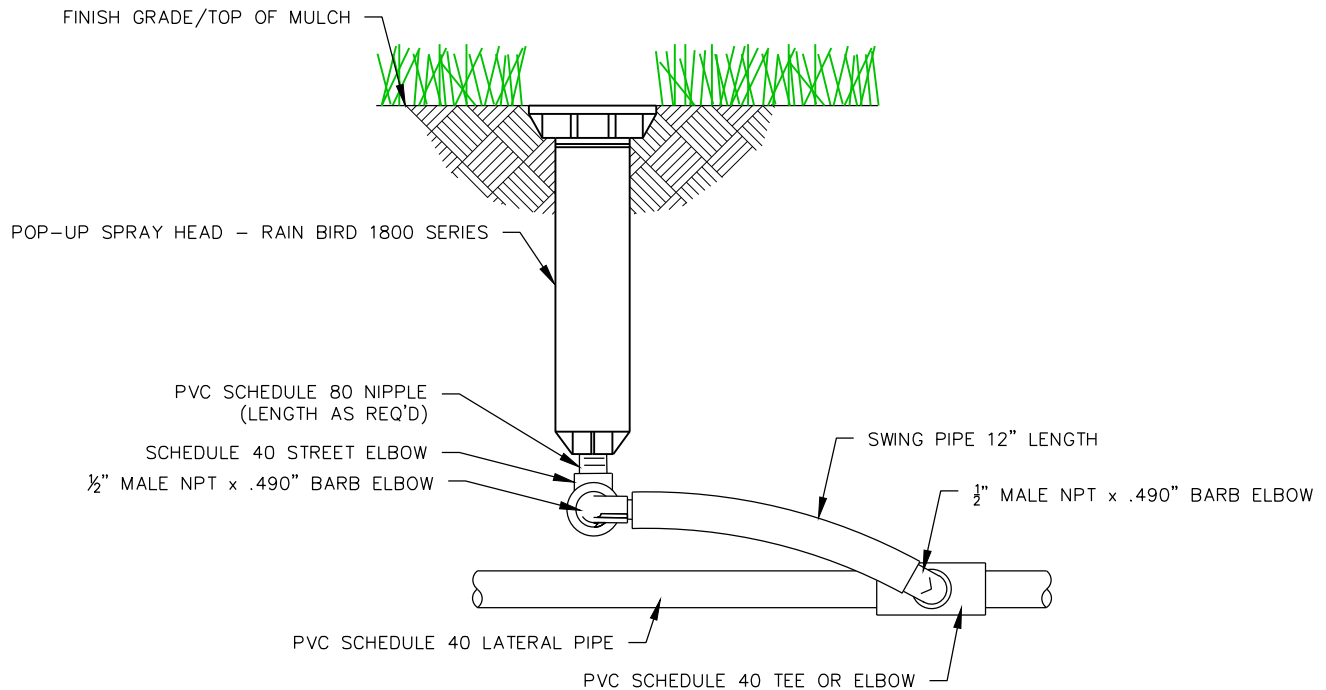


NOTES:

1. HEADS TO INCLUDE 4" MINIMUM POP-UP.
2. NOZZLES TO BE SAME MANUFACTURE AS SPRINKLER HEAD.
3. HEADS TO INCLUDE BUILT-IN CHECK VALVES (SAM) AND PRESSURE REGULATION (PRS) ON SLOPED AREAS.

1	APPROVED BY C.C.		DEC. 2025		<u>POP-UP ROTOR HEAD</u>	IR-10
NO.	AUTHORIZED BY	REVISIONS	DATE			

N:\Engineering\General Documents\Irrigation Systems Standard Details\IR-11 POP-UP SPRAY HEAD.dwg, 12/9/2025 10:12:41 AM

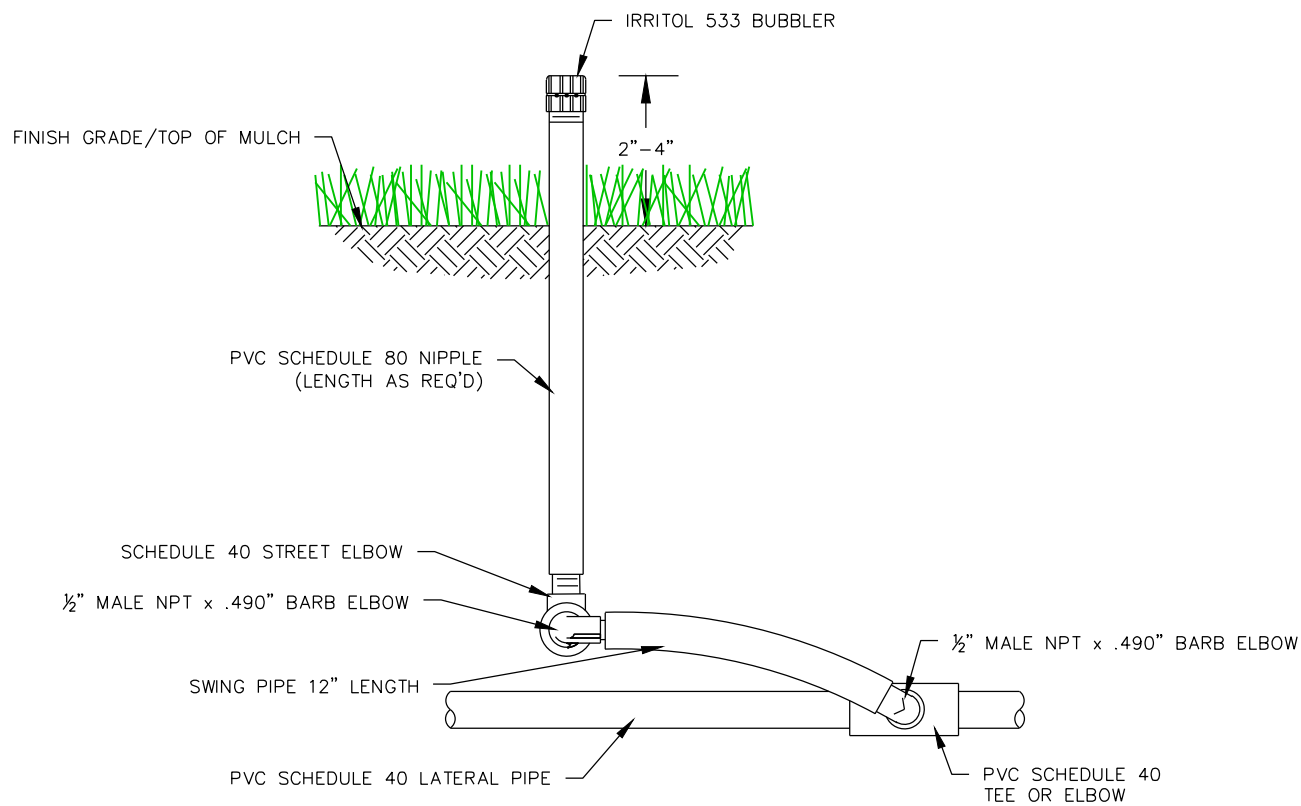


NOTES:

1. HEADS TO INCLUDE 4" MIN. POP-UP.
2. NOZZLES TO BE SAME MANUFACTURE AS SPRINKLER HEAD.
3. HEADS TO INCLUDE BUILT-IN-CHECK VALVES (SAM) AND PRESSURE REGULATION (PRS) ON SLOPED AREAS.

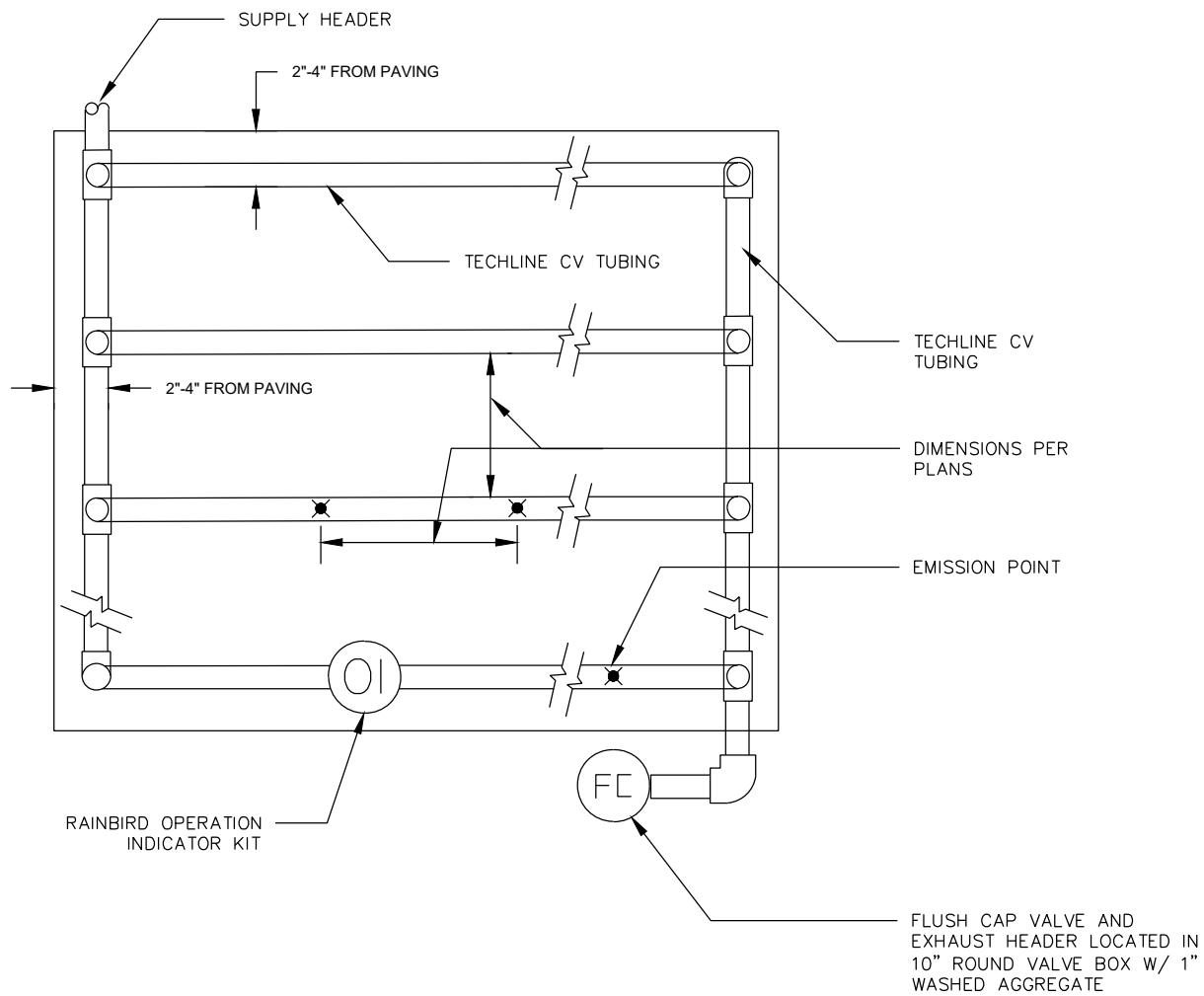
1	APPROVED BY C.C.		DEC. 2025		<u>POP-UP</u> <u>SPRAY HEAD</u>	IR-11
NO.	AUTHORIZED BY	REVISIONS	DATE			

N:\Engineering\General Documents\Irrigation Systems Standard Details\IR-12 BUBBLER.dwg, 12/9/2025 10:14:26 AM



1	APPROVED BY C.C.		DEC. 2025		<u>BUBBLER</u>	IR-12
NO.	AUTHORIZED BY	REVISIONS	DATE			

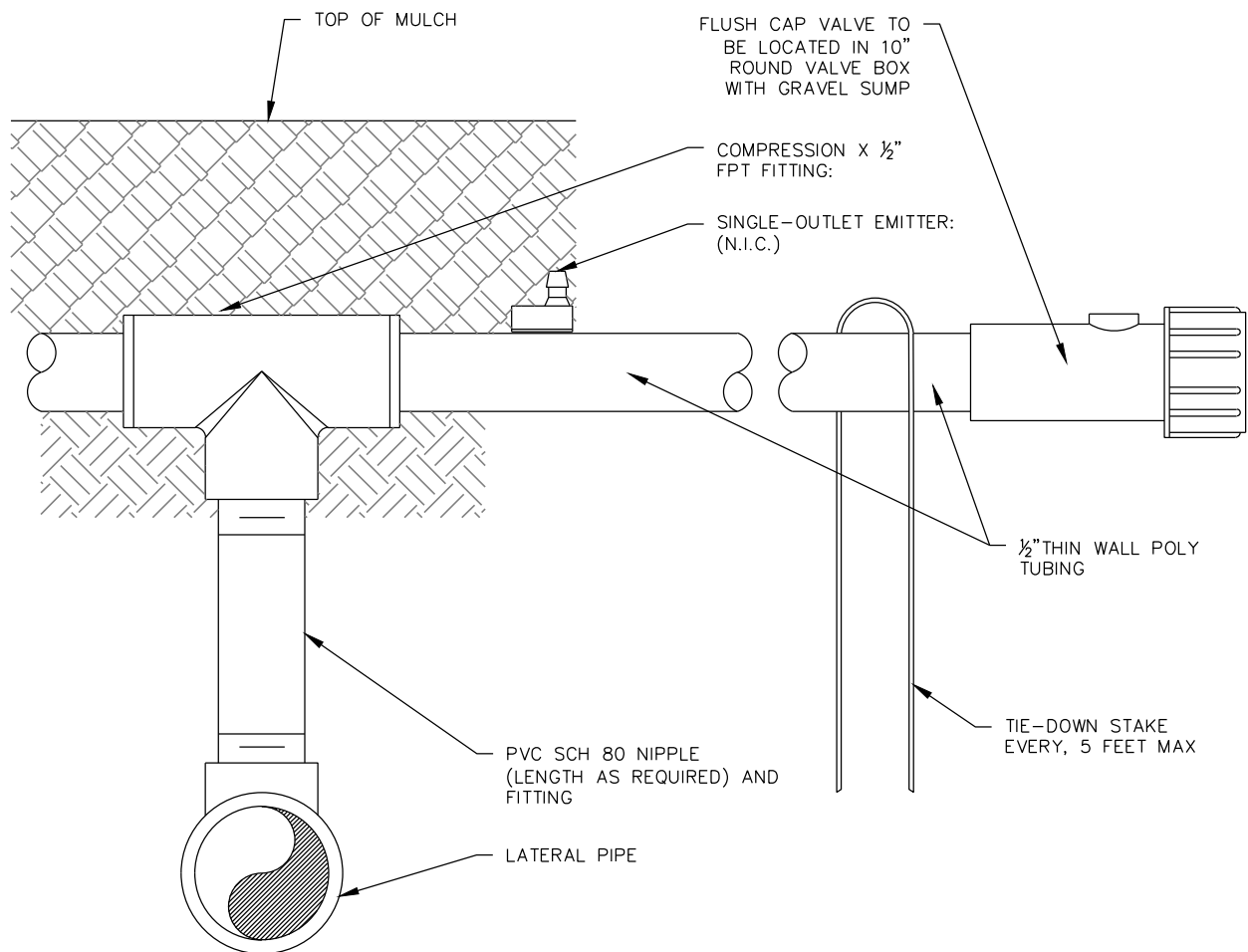
N:\Engineering\General Documents\Irrigation Systems Standard Details\IR-13 IN LINE DRIP GRID LAYOUT.dwg, 12/9/2025 10:16:20 AM



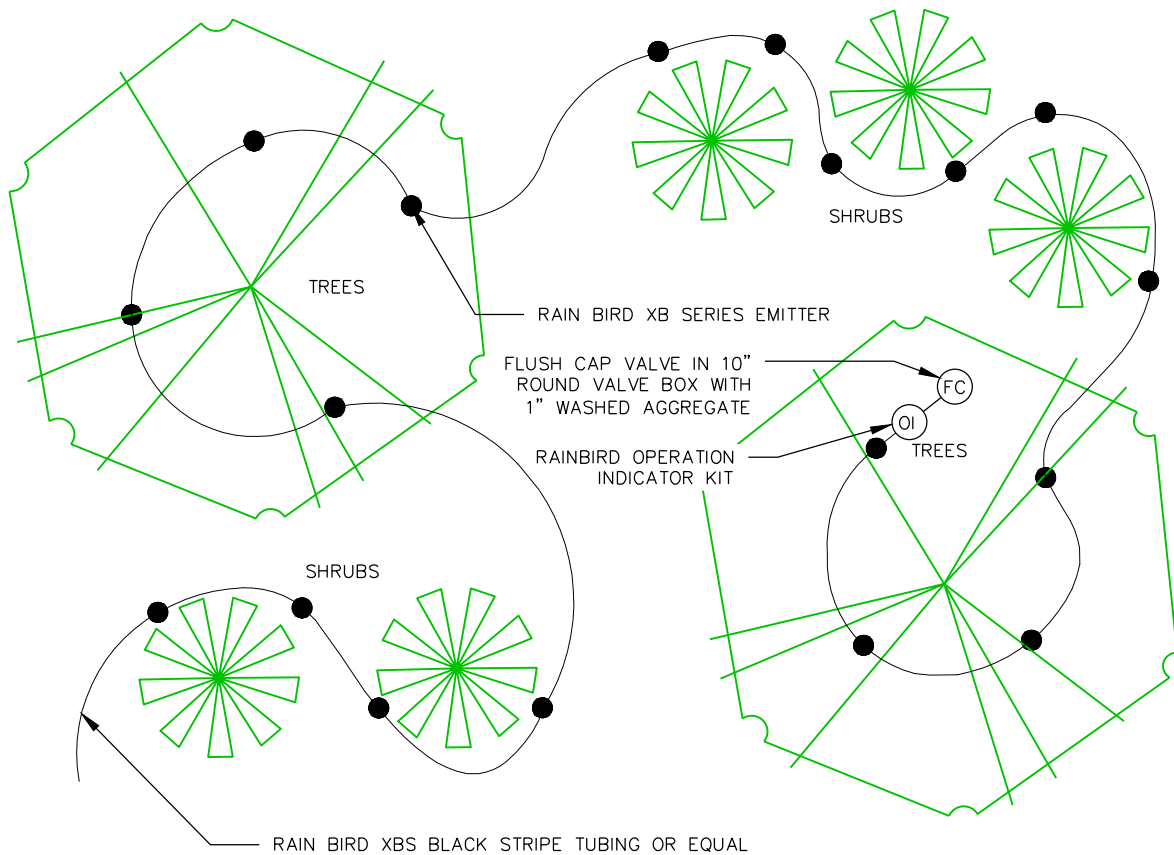
NOTES:

1. INSTALL FLUSH CAP VALVE, PER MANUFACTURER RECOMMENDATION.
2. INSTALL OPERATION KIT NEAR THE END OF THE SYSTEM, PER MANUFACTURERS RECOMMENDATION.

1	APPROVED BY C.C.		DEC. 2025		<u>IN LINE</u> <u>DRIP GRID</u> <u>LAYOUT</u>	IR-13
NO.	AUTHORIZED BY	REVISIONS	DATE			



1	APPROVED BY C.C.		DEC. 2025		<u>PVC TO POLY TUBING CONNECTION</u>	IR-14
NO.	AUTHORIZED BY	REVISIONS	DATE			

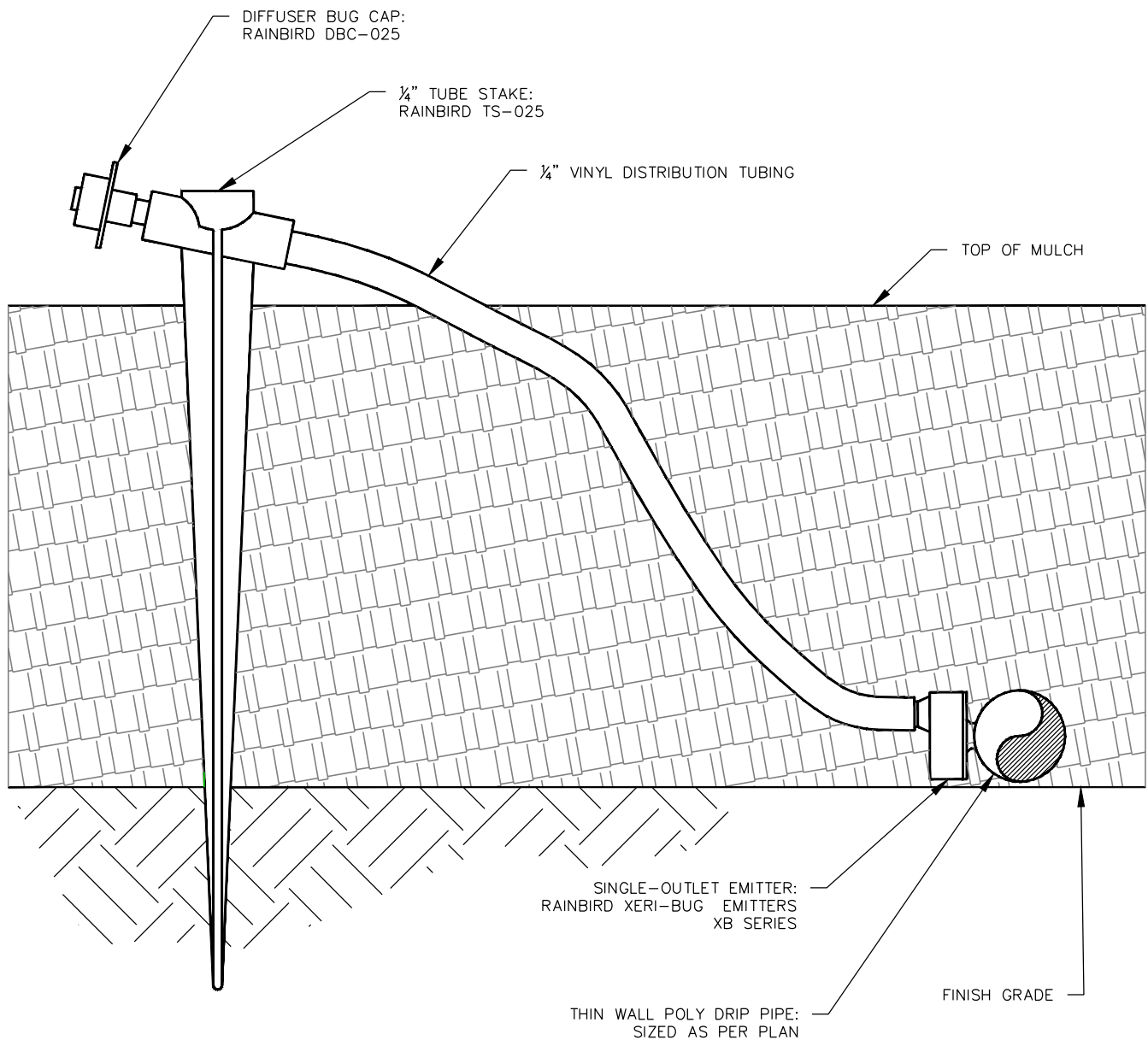


NOTES:

1. LOCATE EMITTERS ON UPHILL SIDE OF SHRUBS. ON SLOPES PROVIDE WATER RETENTION BASIN AROUND PLANT TO ALLOW WATER TO POOL.
2. PLACE 2 MINIMUM EMITTERS PER EACH SHRUB OR PERENNIAL.
3. PLACE 4 MINIMUM EMITTERS PER EACH TREE.
4. EMITTERS SHALL BE PLACED IN CIRCLE PATTERN AROUND TREE FOR UNIFORM ROOT DEVELOPMENT.
5. INSTALL OPERATION KIT NEAR THE END OF THE SYSTEM, PER MANUFACTURERS RECOMMENDATION.

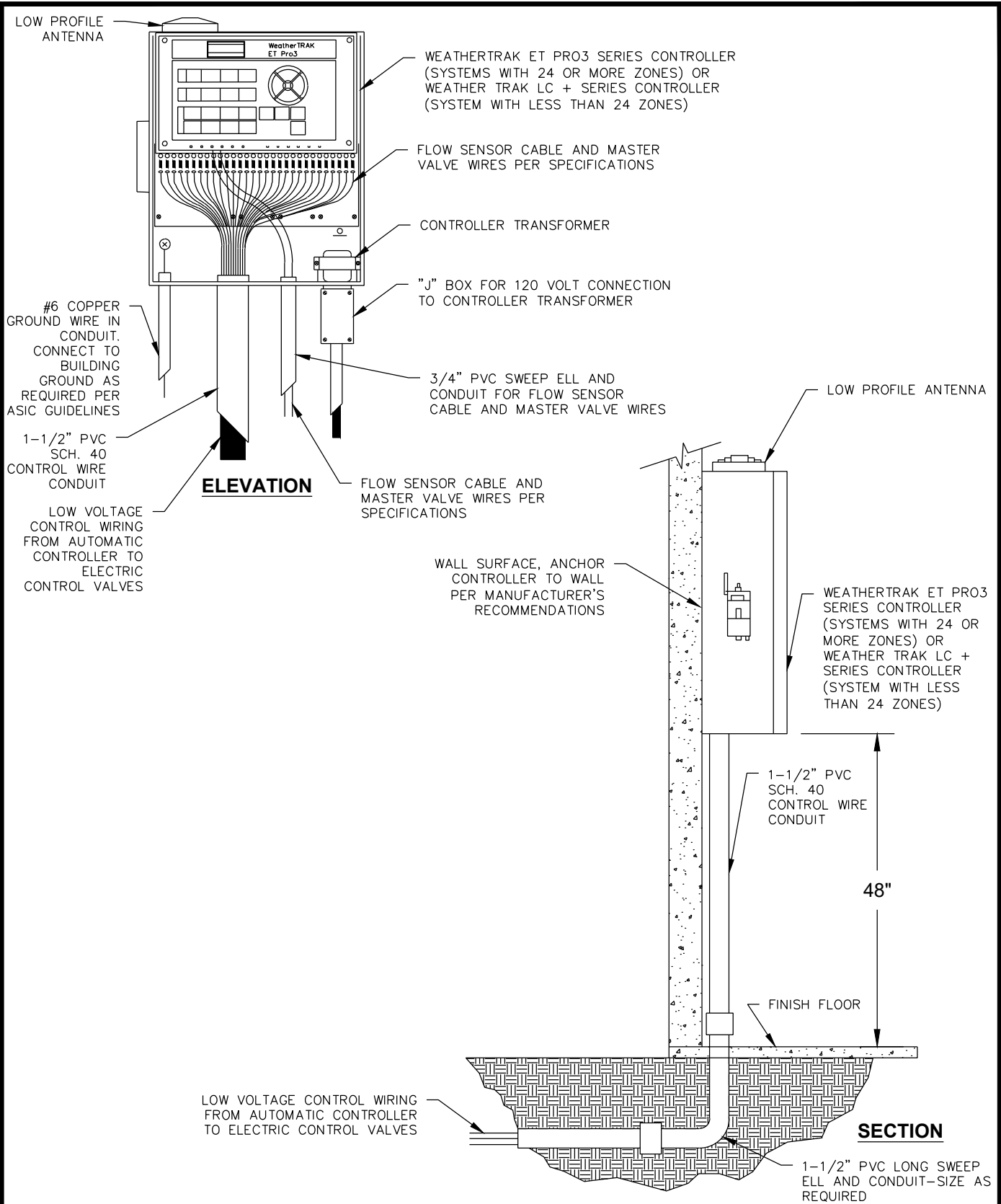
1	APPROVED BY C.C.		DEC. 2025	 DRAPER UTAH ENGINEERING	DRIP POINT SOURCE EMITTER	IR-15
NO.	AUTHORIZED BY	REVISIONS	DATE			

N:\Engineering\General Documents\Irrigation Systems Standard Details\IR-16 EMITTER INTO POLY-TUBE.dwg, 12/9/2025 10:23:06 AM



1	APPROVED BY C.C.		DEC. 2025		<u>EMITTER</u> <u>INTO</u> <u>POLY-TUBE</u>	IR-16
NO.	AUTHORIZED BY	REVISIONS	DATE			

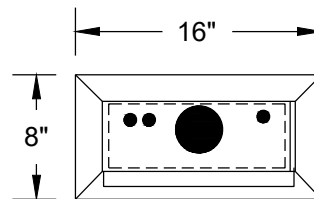
N:\Engineering\General Documents\Irrigation Systems Standard Details\IR-17 WALL MOUNT CONTROLLER.dwg, 12/9/2025 10:25:43 AM



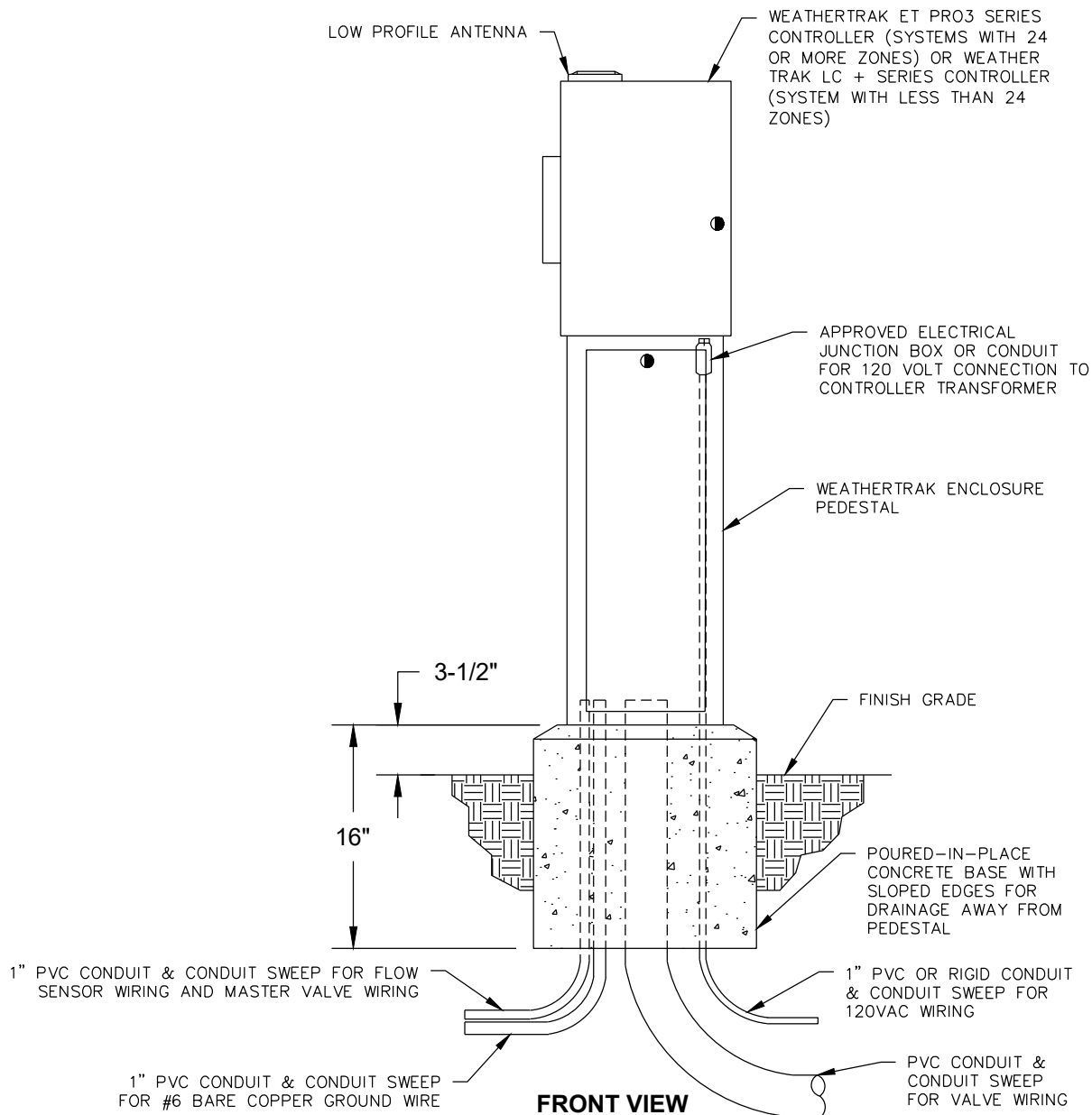
1	APPROVED BY C.C.		DEC. 2025		WALL MOUNT CONTROLLER	IR-17
NO.	AUTHORIZED BY	REVISIONS	DATE			

NOTES:

1. MINIMUM CONCRETE BASE REQUIREMENTS:
CONTRACTOR SHALL VERIFY NUMBER & SIZE OF
CONDUITS REQUIRED FOR EACH ENCLOSURE. USE
MOUNTING TEMPLATE TO LOCATE "J" BOLT FASTENERS.
2. SEE IRRIGATION DRAWINGS FOR ENCLOSURE DIMENSIONS
& FINISH

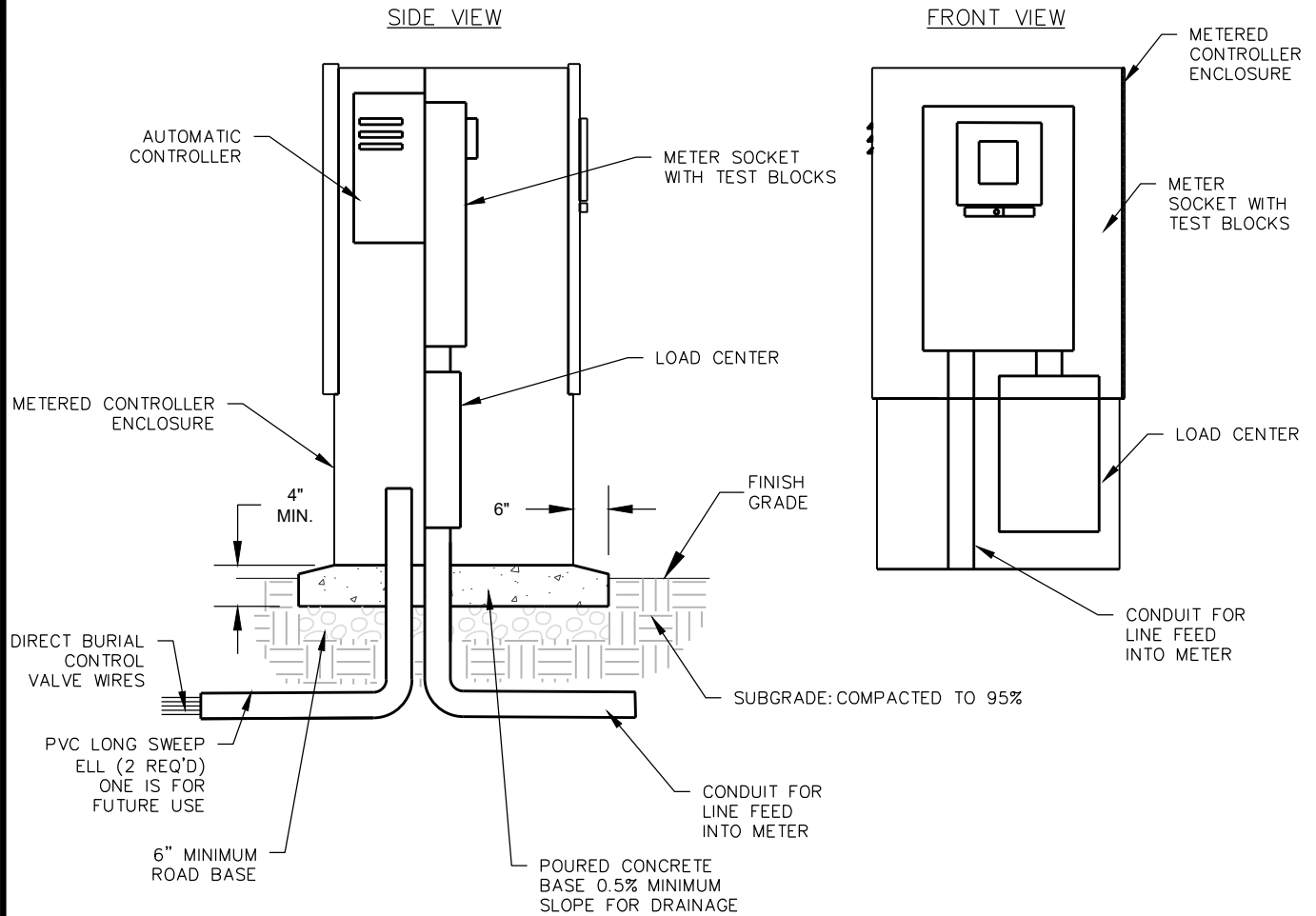


TOP VIEW



FRONT VIEW

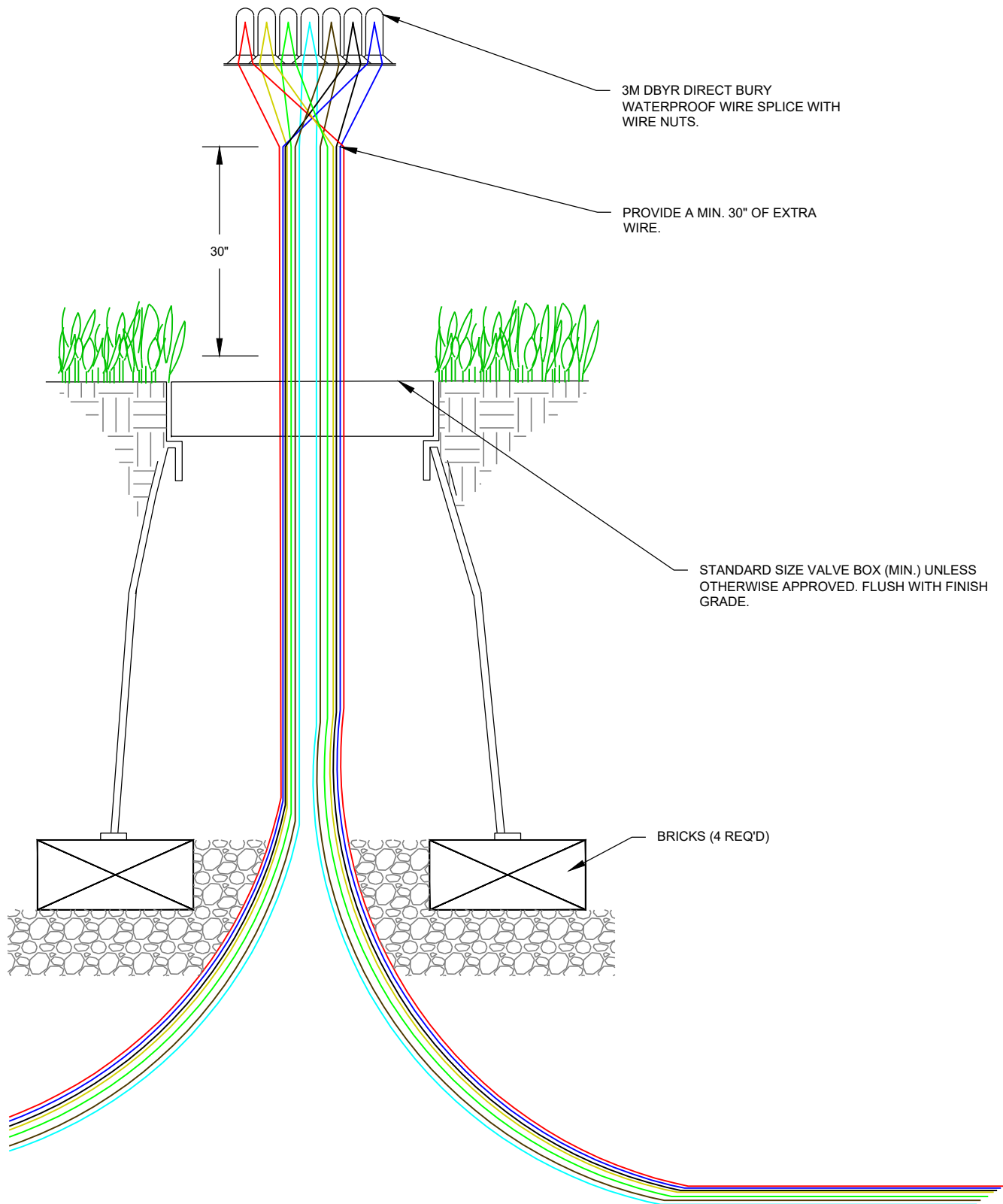
1	APPROVED BY C.C.		DEC. 2025	 ENGINEERING	PEDESTAL MOUNT CONTROLLER	IR-18
NO.	AUTHORIZED BY	REVISIONS	DATE			



NOTES:

1. GROUND LOW VOLTAGE WITH 3 GROUND ROD GRID 8 FEET APART

1	APPROVED BY C.C.		DEC. 2025		<u>CONTROLLER</u> <u>METER</u> <u>ENCLOSURE</u>	IR-19
NO.	AUTHORIZED BY	REVISIONS	DATE			



1	APPROVED BY C.C.		DEC. 2025		<u>WIRE SPLICE DETAIL</u>	IR-20
NO.	AUTHORIZED BY	REVISIONS	DATE			