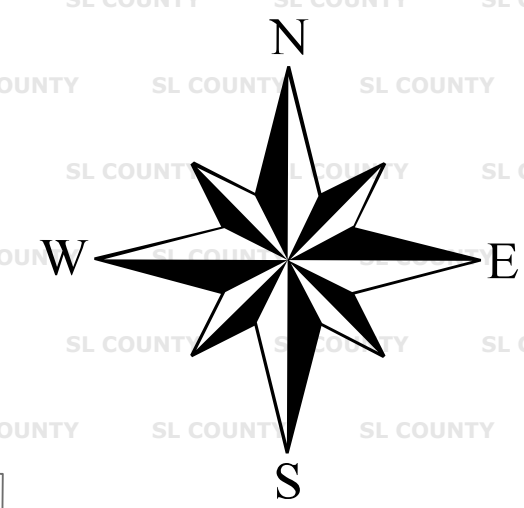




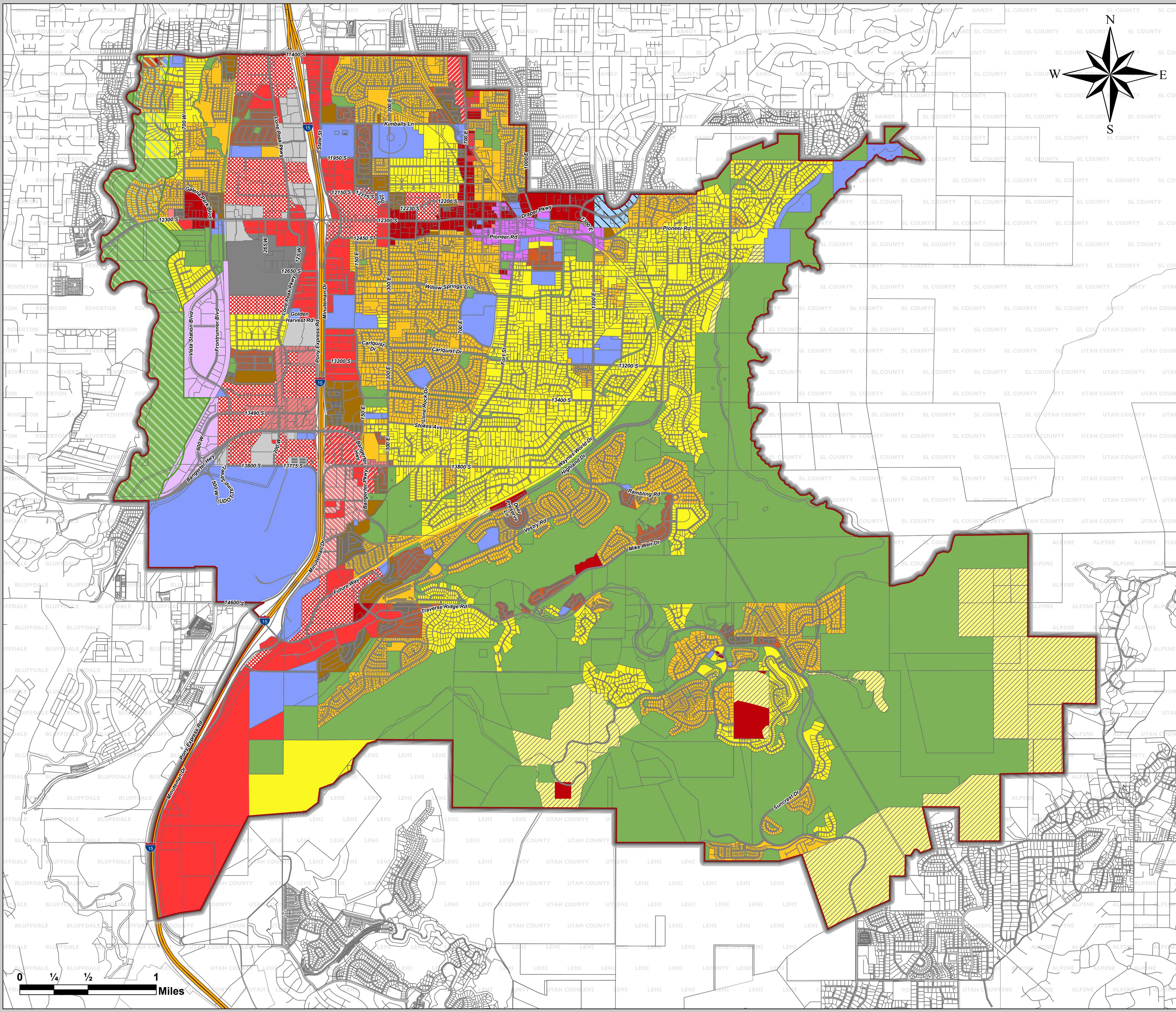
OFFICIAL LAND USE MAP OF THE GENERAL PLAN

ADOPTED SEPTEMBER 30, 2001



- Map Legend -

- Residential**
 - Hillside Low Density (1 du/2 ac to 1 du/5 ac)
 - Low-Medium Density (Up to 2du/ac)
 - Medium Density (2-4 du/ac)
 - Medium-High Density (4-8 du/ac)
 - High Density (8-12 du/ac)
- Commercial**
 - Community Commercial
 - Community/Neighborhood Commercial
 - Neighborhood Commercial
 - Regional Commercial
 - Office/Service
 - Destination Commercial
- Industrial / Manufacturing**
 - Industrial/Manufacturing
 - Business/Light Manufacturing
- Special Use Areas**
 - Commercial Special District
 - Cultural/Institutional
 - Town Center
 - Transit Station District
 - Open Space/Parks
 - Growth Area
 - Sensitive River Overlay



PROPERTY LINES WERE OBTAINED FROM GIS INFORMATION THROUGH SALT LAKE & UTAH COUNTIES. DRAPER CITY HAS MADE A REASONABLE EFFORT TO PROVIDE CORRECT INFORMATION, BUT MAKES NO REPRESENTATION AS TO THE COMPLETENESS OR ACCURACY.

**LAST AMENDED ON
September 17, 2024**

Zoning Map Printed 09-20-2024

