
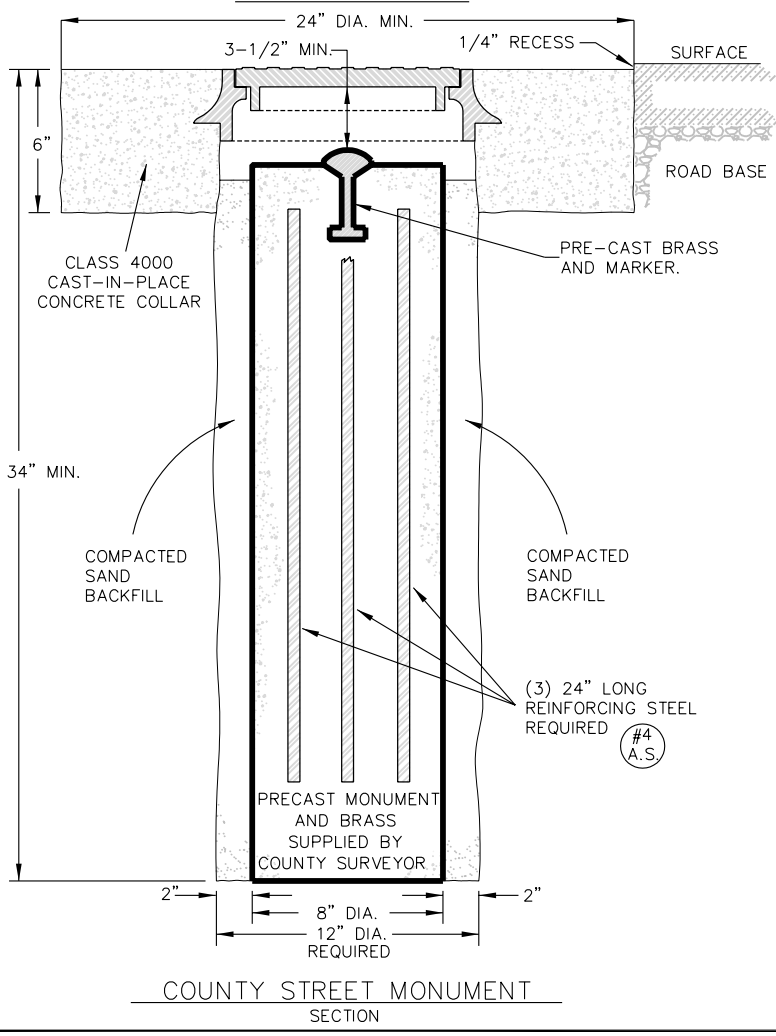
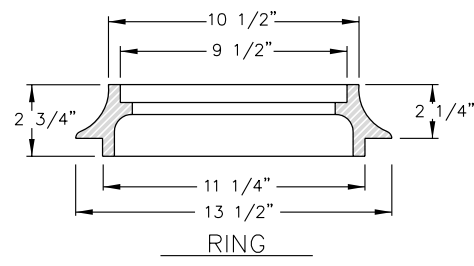
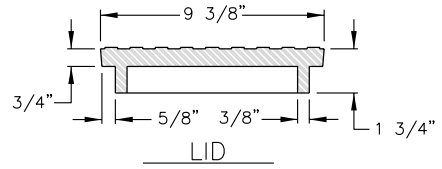
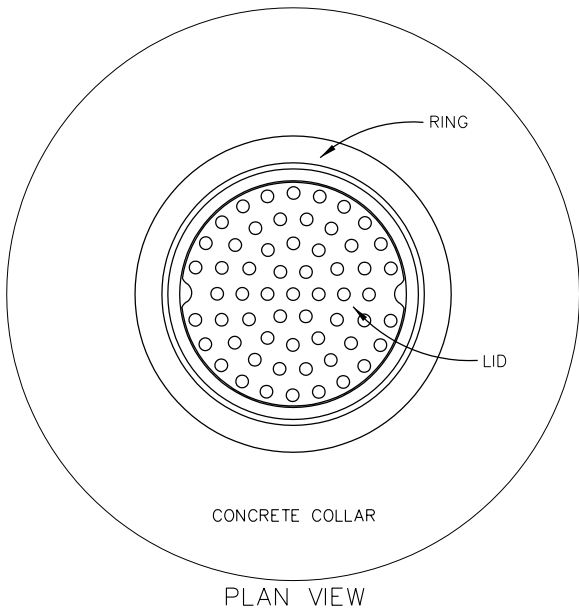


# ***MISCELLANEOUS STANDARDS***

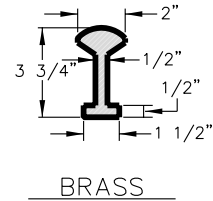
## ***INDEX:***

*COUNTY MONUMENT DETAIL.....CM-01*  
*COUNTY MONUMENT DETAIL.....CM-02*  
*ARTERIAL STREET LIGHT DETAIL.....LP-01*  
*SUBDIVISION STREET LIGHT DETAIL.....LP-02*  
*STREET LIGHT CONNECTION DETAIL.....LP-03*  
*STREET NAME SIGN DETAIL.....SG-01*  
*SPILLWAYS DETAIL.....SP-01*

1	APPROVED		SEPT. 06		<u>MISCELLANEOUS STANDARDS COVER SHEET</u>	<h1 style="margin: 0;">MS-0</h1>
NO.	AUTHORIZED BY	REVISIONS	DATE	DRAPER CITY		



**RING AND LID**  
 CAST IRON to conform to ASTM  
 A-48, CLASS 35B  
 H-20 Wheel Loading  
 Est. Weight: 43 lbs.

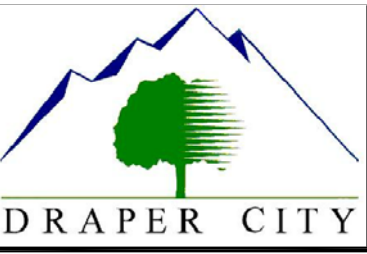


Prepared by:  
 Salt Lake County Surveyor  
 Vaughn E. Butler, L.S.  
 2001 S. State St. #N1500  
 Salt Lake City, Utah 84190-1350  
 (801) 468-2028

COUNTY STREET MONUMENT  
 AND  
 MONUMENT FLOW PROCESS



1	APPROVED		SEPT. 06
NO.	AUTHORIZED BY	REVISIONS	DATE



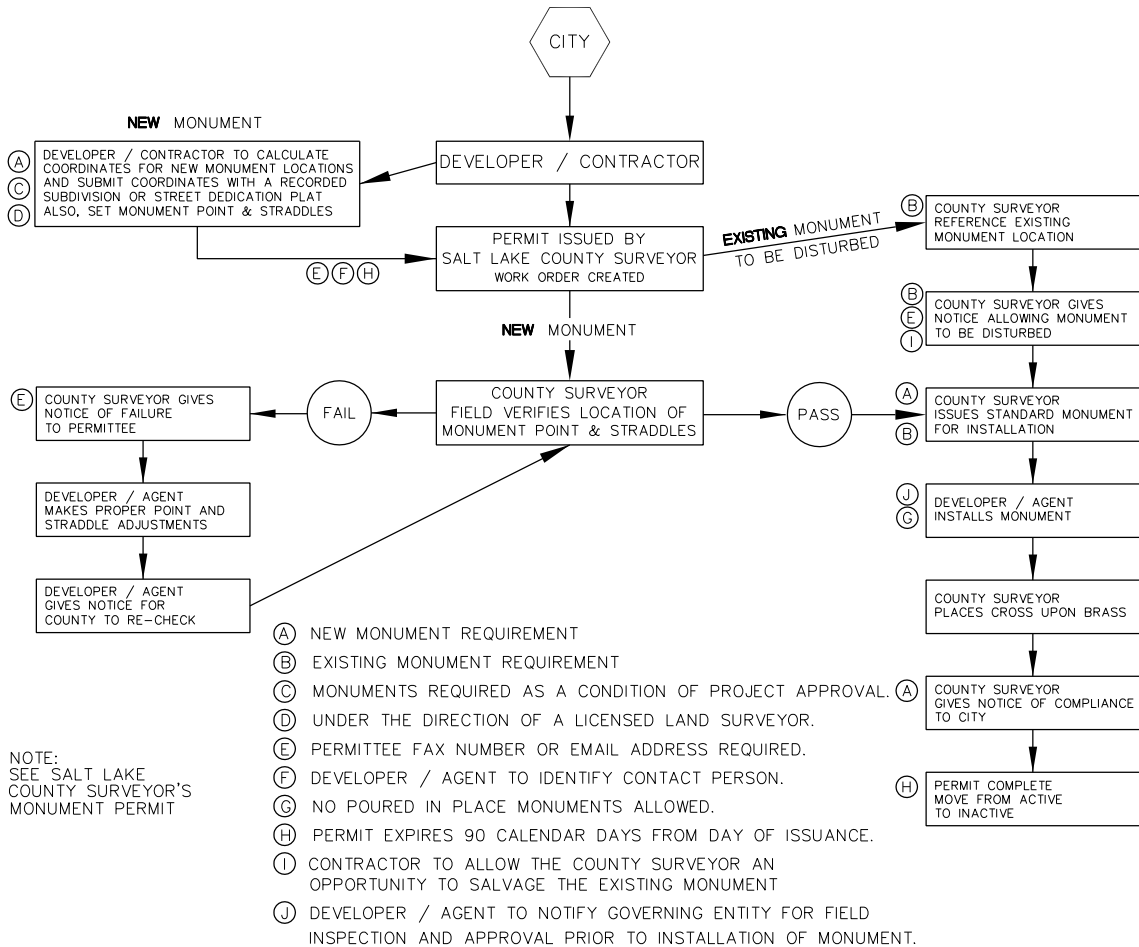
**STANDARD  
 COUNTY  
 MONUMENT  
 DETAIL**

**CM-01**

## GENERAL NOTES

1. Materials, construction and workmanship shall be in accordance with APWA Manual of Standard Specifications (latest edition), and supplements thereto which are in effect at the date of this request.
2. County Monument cover, frame and pre cast brass and marker base shall be furnished by the County as provided in the permitting process.
3. Cover, frame, riser and pre cast brass and marker base can be obtained at Public Works Operations, 7125 South 600 West, Midvale, Utah 84047. The developer, contractor, or agent shall be responsible for the transportation of all monuments and incidental items required to complete the monument installation.
4. The County Surveyor shall check monument point and straddles before monuments can be installed.
5. Reinforcing steel used in County survey monuments shall be No. 4 bars.
6. The County Surveyor shall cross brass marker after installation of survey monument.
7. Contractor shall allow the County Surveyor an opportunity to salvage all existing monuments, specifically; rings, risers, lids, and brass markers.
8. Field inspection by governing entity required prior to installation of monument.

## MONUMENT FLOW PROCESS



Prepared by:  
Salt Lake County Surveyor  
Vaughn E. Butler, L.S.  
2001 S. State St. #N1500  
Salt Lake City, Utah 84190-1350  
(801) 468-2028

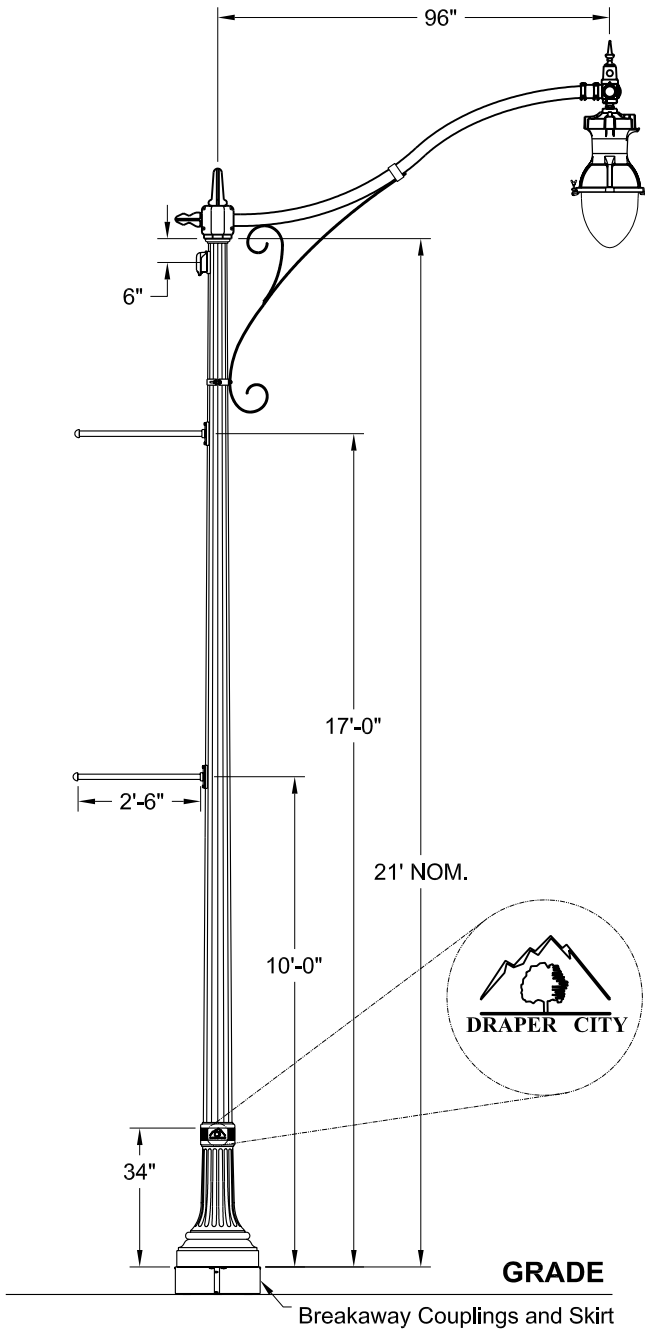
COUNTY STREET MONUMENT  
AND  
MONUMENT FLOW PROCESS



1	APPROVED	PENDING		<p style="text-align: center;"><b>STANDARD COUNTY MONUMENT DETAIL</b></p>	CM-02
NO.	AUTHORIZED BY	REVISIONS	DATE	<p style="text-align: center;"><b>DRAPER CITY</b></p>	

# Draper City

# Specifications



### POST DESCRIPTION

The lighting post shall be cast iron and steel construction with a tapered fluted cast iron base with custom logo and a 16 flute tapered steel shaft, a duplex GFCI receptacle with small weatherproof while-in-use cover, cast aluminum and aluminum pipe luminaire arm with clamp on brace and two bolt on Ø1" x 30" banner arms with half sphere finials.

### MATERIALS

The base material shall be heavy-wall cast iron formed true to pattern with complete detail. The shaft shall be steel. Arm shall be heavy wall cast aluminum and 2" schedule 40 pipe. Banner arms shall be all aluminum. All hardware shall be tamper resistant, stainless steel. Anchor bolts shall be hot-dip galvanized steel.

### DIMENSIONS

The post shall be 21'-0" in height with a Ø20" x 34" tall base. Shaft shall taper from Ø7" to Ø4½". Luminaire arm shall provide a light center 96" from shaft center. Banner arms are Ø1" x 30" long.

### INSTALLATION

Post provided with (4) ¾"Ø x36" hot dip galvanized steel L-type anchor bolts. Breakaway couplings and a skirt shall be included and installed at the base of the post. A door is located in the base to provide anchorage and wiring access.

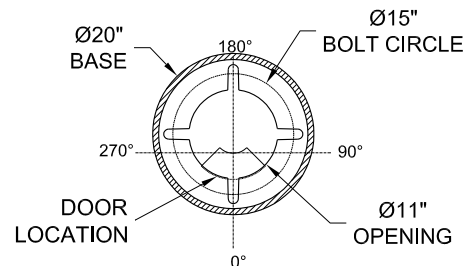
### FINISH

The post assembly shall be shipped with a black powder coat finish.

### LUMINAIRE DESCRIPTION

The Esplanade luminaire is styled to replicate the "teardrop" luminaires that lighted boulevards in the first half of this century. Designed for light control and ease of installation and maintenance, the Esplanade has a precision optical system for true street lighting performance. For complete luminaire specifications, see US-1255.

### Anchorage Detail



### Catalog #:

NY21/20-CIS/BK-MODLOGO-FGIUS-SBK-VGC96/1-CA/BK-2BA30H/1/BO-CA/BK-WLLF/200-SCA/BKR-TPRC-SBK-BREAKCOUP-NY20SKIRT-ES400MH20B4-LAMP

ARCHITECTURAL OUTDOOR ORDER #:

TYPE:

DRAWING NO: US-3982

THIS DRAWING, WHEN APPROVED, SHALL BECOME THE COMPLETE SPECIFICATION FOR THE MATERIAL TO BE FURNISHED BY HOLOPHANE ON THE ORDER NOTED ABOVE. A UNIT OF SIMILAR DESIGN MAY BE SUPPLIED, BUT ONLY AFTER APPROVAL BY THE CUSTOMER IN WRITING. ON POLE ORDERS AN ANCHOR BOLT TEMPLATE PRINT WILL BE SUPPLIED WITH EACH ANCHOR BOLT ORDER TO MATCH THE POLE PROVIDED.

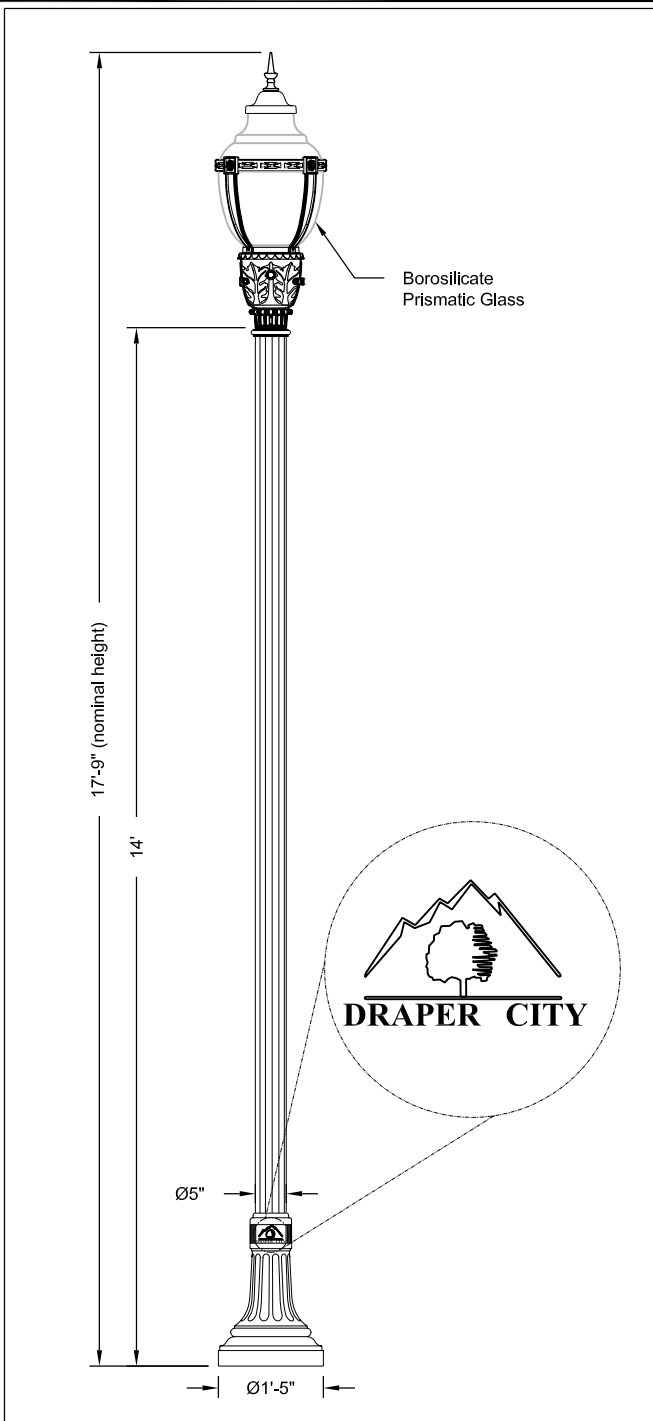
THIS PRINT IS THE PROPERTY OF HOLOPHANE AND IS LOANED SUBJECT TO RETURN UPON DEMAND AND UPON EXPRESS CONDITION THAT IT WILL NOT BE USED DIRECTLY OR INDIRECTLY IN ANY WAY DETRIMENTAL TO OUR INTERESTS, AND ONLY IN CONNECTION WITH MATERIAL FURNISHED BY HOLOPHANE.



SCALE: N/A  
DRAWN: RAF  
APP'D:  
DATE: 06-17-04

1	APPROVED		SEPT. 06		<p><b>STANDARD ARTERIAL STREET LIGHT DETAIL</b></p>	<p><b>LP-01</b></p>
NO.	AUTHORIZED BY	REVISIONS	DATE			

N:\Engineering\Draper City Standard Specifications & Details(2007-08)\standard drawings\MISCELLANEOUS DETAILS\LP-02.dwg, LP-02, 7/23/2008 8:43:20 AM



## Specifications

### POST DESCRIPTION

The lighting post shall be all aluminum, one-piece construction, with a classic tapered and fluted base design. The shaft shall be Ø5" fluted. The post shall be Holophanes' catalog number NY14F5/17-CA/BK. A 27" ELC series single arm will mount atop the post.

### MATERIALS

The base shall be heavy wall, cast aluminum produced from certified ASTM 356.1 ingot per ASTM B-179-95a or ASTM B26-95. The straight shafts shall be extruded from aluminum, ASTM 6061 alloy, heat treated to a T6 temper. All hardware shall be tamper resistant stainless steel. Anchor bolts to be completely hot dip galvanized.

### CONSTRUCTION

The shaft shall be double welded to the base casting and shipped as one piece for maximum structural integrity. The shaft shall be circumferentially welded inside the base casting at the top of the access door, and externally where the shaft exits the base. All exposed welds below 8' shall be ground smooth. All welding shall be per ANSI/AWS D1.2-90. All welders shall be certified per Section 5 of ANSI/AWS D1.2-90.

### DIMENSIONS

The post shall be 14'-0" in height with a 17" diameter base. The shaft diameter shall be 5". At the top of the post, a Ø3" x 9" tall tenon with a transitional donut shall be provided for arm mounting.

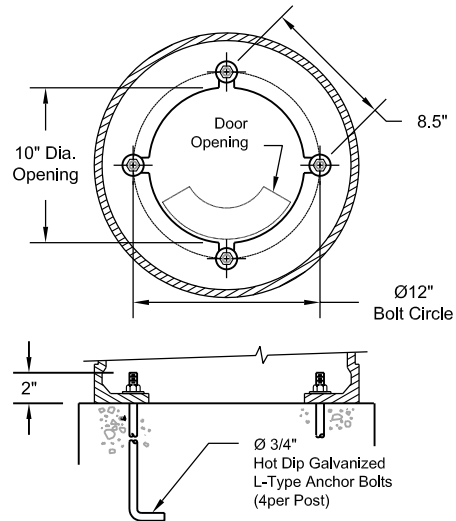
### INSTALLATION

The post shall be provided with four, hot dip galvanized L-type anchor bolts to be installed on a 12" diameter bolt circle. A door shall be provided in the base for anchorage and wiring access. A grounding screw shall be provided inside the base opposite the door.

### LUMINAIRE DESCRIPTION

- Enhanced Washington Postlite
  - 100 Watt High Pressure Sodium (Mogul), Multivolt (Prewired 120V)
  - Asymmetric Wide-Lunar Optics
  - Ribs, Band and Spike Finial (Black)
  - Standard Holophane Black Finish
  - Protected Starter
  - Twistlock Photocontrol Receptacle
- For complete specifications see Us-4010.

### Anchorage Detail



**Catalog #s:**  
ZNY14F5/17-CA/BK - WE100HPMAB7B6 H PS



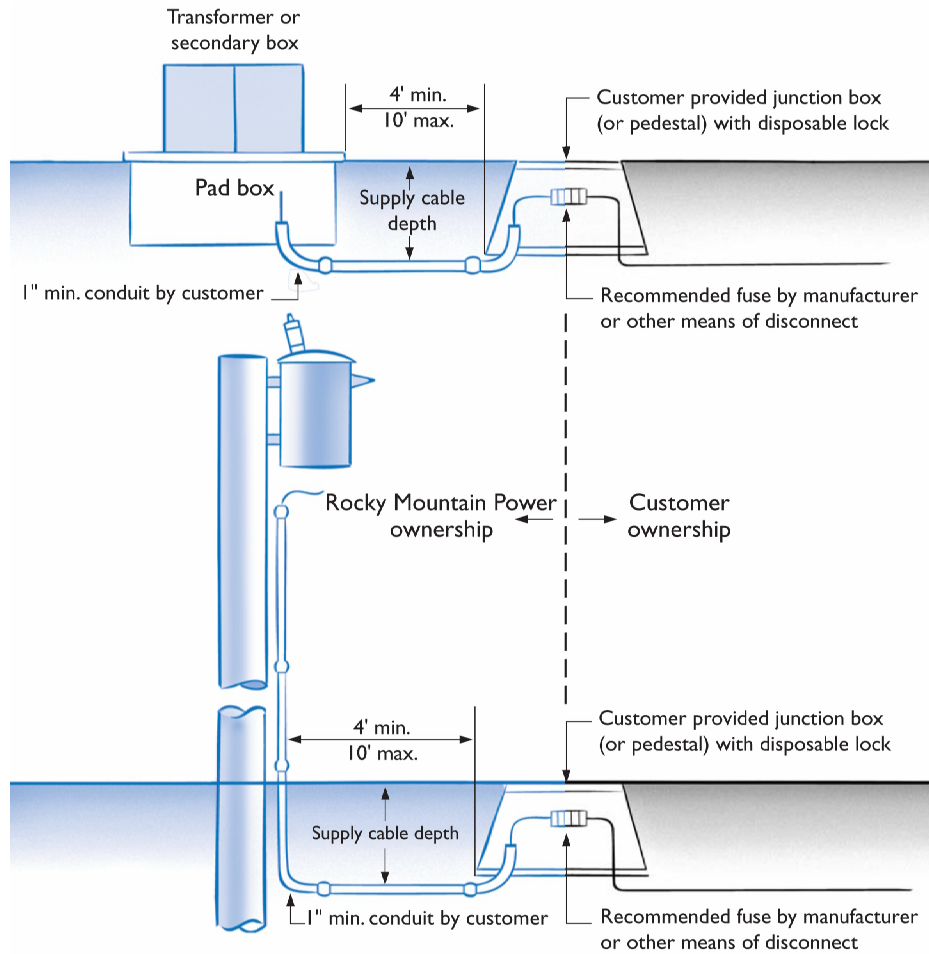
**Draper City**  
Draper City, UT

ORDER #:	TYPE:	DRAWING #:
REVISION: 2	REVISION DATE: 12-28-07	TSG 003447
DRAWN: ACH	ORIGIN DATE: 12-07-07	PAGE: 1 of 1

THIS DRAWING, WHEN APPROVED, SHALL BECOME THE COMPLETE SPECIFICATION FOR THE MATERIAL TO BE FURNISHED BY HOLOPHANE ON THE ORDER NOTED ABOVE. A UNIT OF SIMILAR DESIGN MAY BE SUPPLIED, BUT ONLY AFTER APPROVAL BY THE CUSTOMER IN WRITING. ON POLE ORDERS AN ANCHOR BOLT TEMPLATE PRINT WILL BE SUPPLIED WITH EACH ANCHOR BOLT ORDER TO MATCH THE POLE PROVIDED. THIS PRINT IS THE PROPERTY OF HOLOPHANE AND IS LOANED SUBJECT TO RETURN UPON DEMAND AND UPON EXPRESS CONDITION THAT IT WILL NOT BE USED DIRECTLY OR INDIRECTLY IN ANY WAY DETRIMENTAL TO OUR INTERESTS, AND ONLY IN CONNECTION WITH MATERIAL FURNISHED BY HOLOPHANE.

1	APPROVED		SEPT. 06		<b>STANDARD SUBDIVISION STREET LIGHT DETAIL</b>	<b>LP-02</b>
NO.	AUTHORIZED BY	REVISIONS	DATE			

## Streetlight Point-of-Disconnect Diagram




Customer is responsible for:

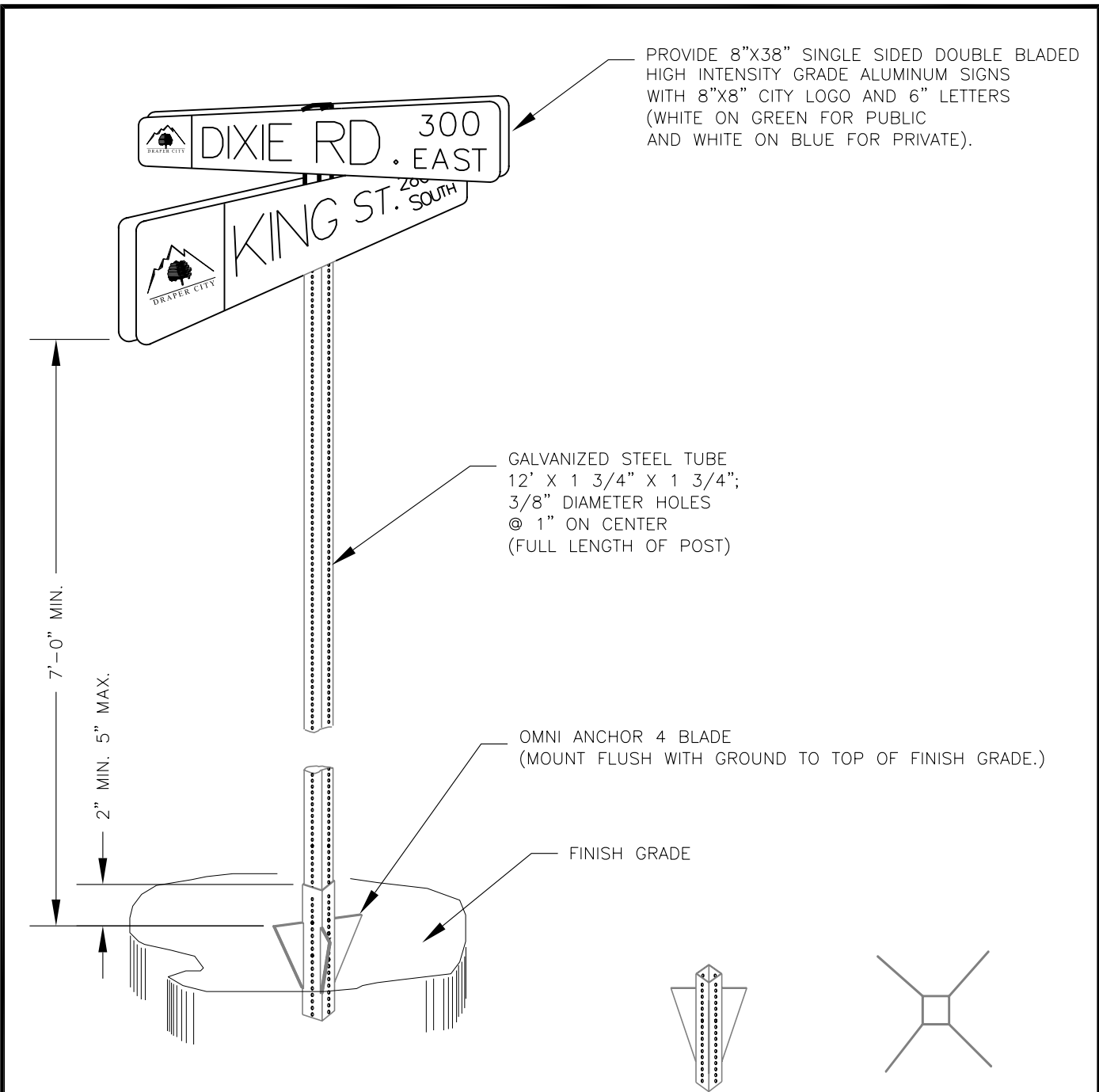
- Providing and installing a junction box or pedestal, conduit, fusing and customer-owned wire. The junction box or pedestal must be strong enough for incidental traffic areas
- Coordinating with Rocky Mountain Power on junction box or pedestal location and all digging within the vicinity of Rocky Mountain Power facilities
- Ensuring that construction of new or remodeled installations conform to applicable provisions of the NEC State Rules, as well as city and county codes

Rocky Mountain Power is responsible for:

- Installing and connecting wire from Rocky Mountain Power facilities to the point of disconnect.



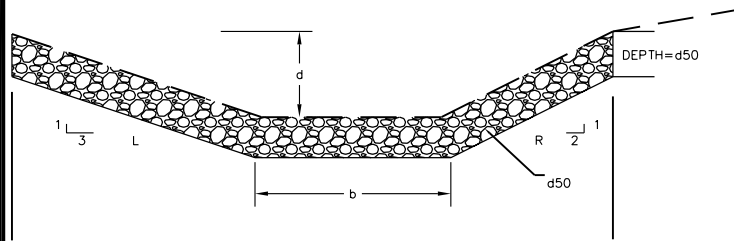
1	APPROVED		PENDING		<p><b>ROCKY MTN. POWER POINT OF DISCONNECT</b></p>	<p><b>LP-03</b></p>
NO.	AUTHORIZED BY	REVISIONS	DATE	<p><b>DRAPER CITY</b></p>		



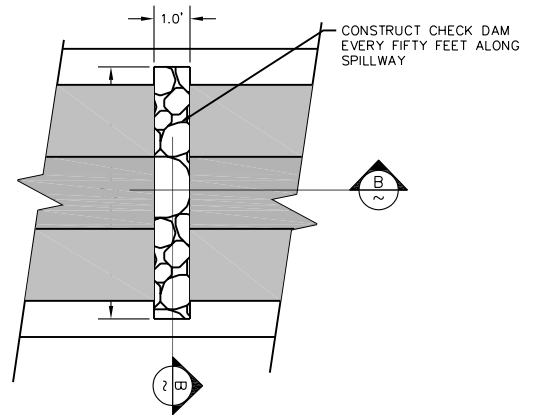
**NOTES**

1. SECURE ENGINEER'S APPROVAL OF SIGN FORMAT AND INSTALLATION
2. INSTALL THE EDGE OF THE SIGN 2 FEET FROM THE VERTICAL EXTENSION OF THE BACK OF CURB AS NEAR AS POSSIBLE TO THE APPROACH CURB P.C.
3. ALL STREET SIGNS (STOP, SPEED, ETC.) SHALL BE 7' MIN. FROM GROUND TO BOTTOM OF SIGN

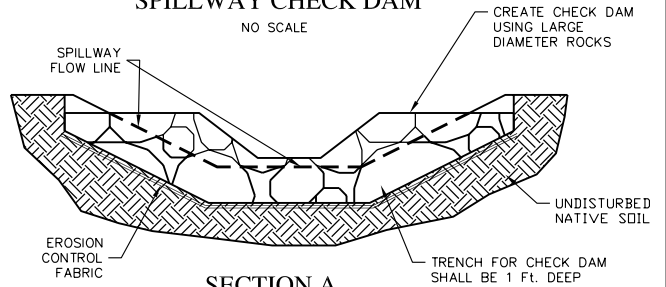
1	APPROVED		SEPT. 06		<p><b>STANDARD STREET NAME SIGN DETAIL</b></p>	<p><b>SG-01</b></p>
NO.	AUTHORIZED BY	REVISIONS	DATE			



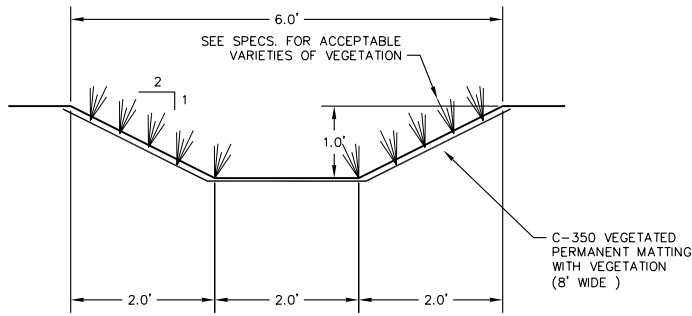
**CROSS SECTION SPILLWAY**  
NO SCALE



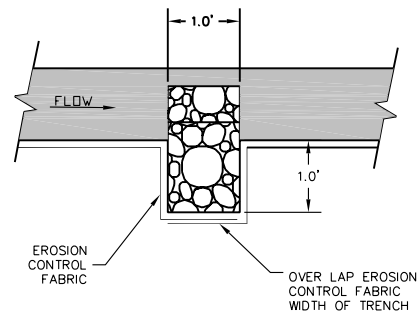
**PLAN VIEW SPILLWAY CHECK DAM**  
NO SCALE



**SECTION A SPILLWAY CHECK DAM**  
NO SCALE



**CROSS SECTION SPILLWAY**  
NO SCALE



**SECTION B SPILLWAY CHECK DAM**  
NO SCALE

1	APPROVED		SEPT. 06		<p><b>STANDARD SPILLWAYS DETAIL</b></p>	<p><b>SP-01</b></p>
NO.	AUTHORIZED BY	REVISIONS	DATE			