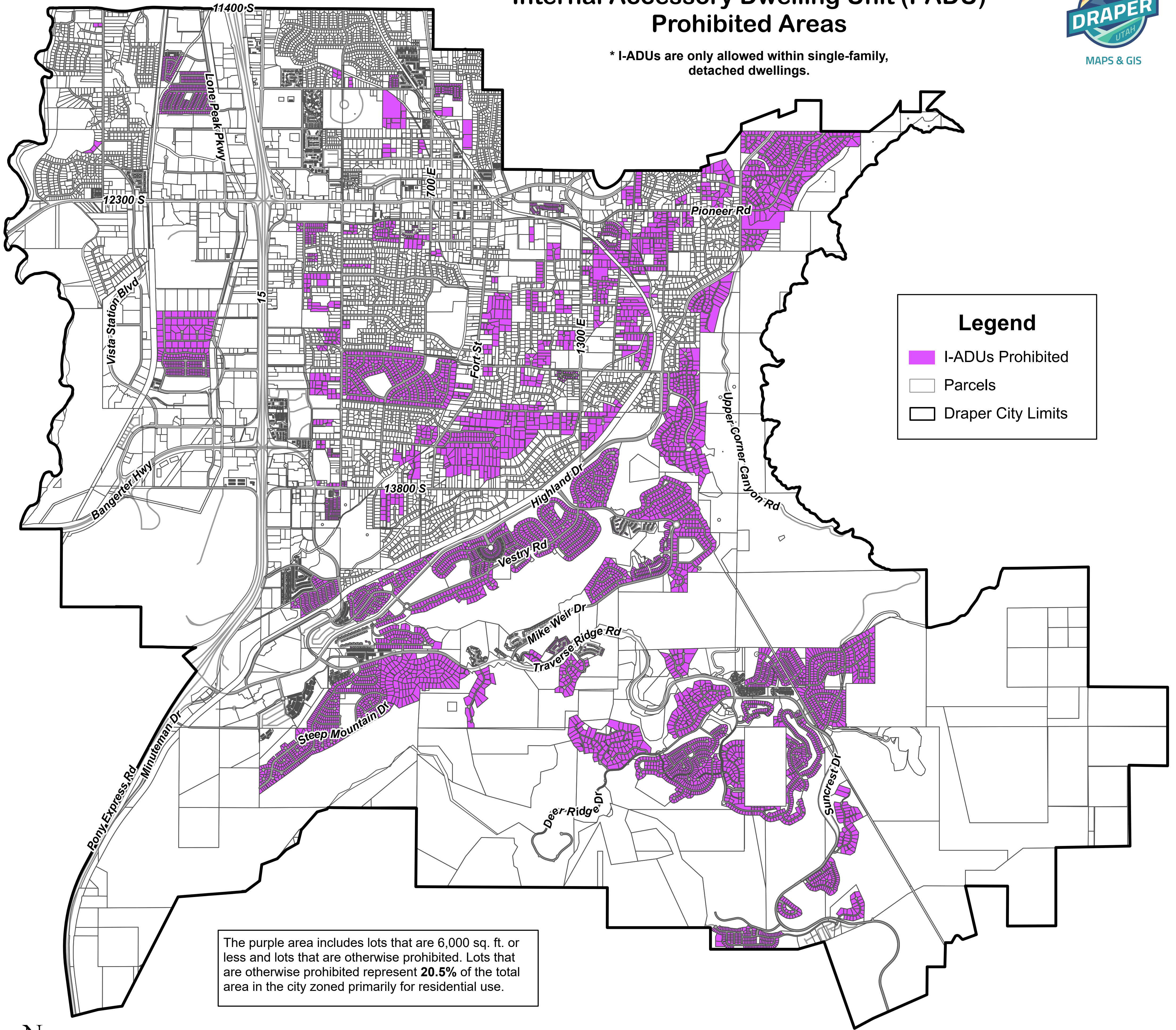


Internal Accessory Dwelling Unit (I-ADU) Prohibited Areas

* I-ADUs are only allowed within single-family, detached dwellings.



The purple area includes lots that are 6,000 sq. ft. or less and lots that are otherwise prohibited. Lots that are otherwise prohibited represent **20.5%** of the total area in the city zoned primarily for residential use.