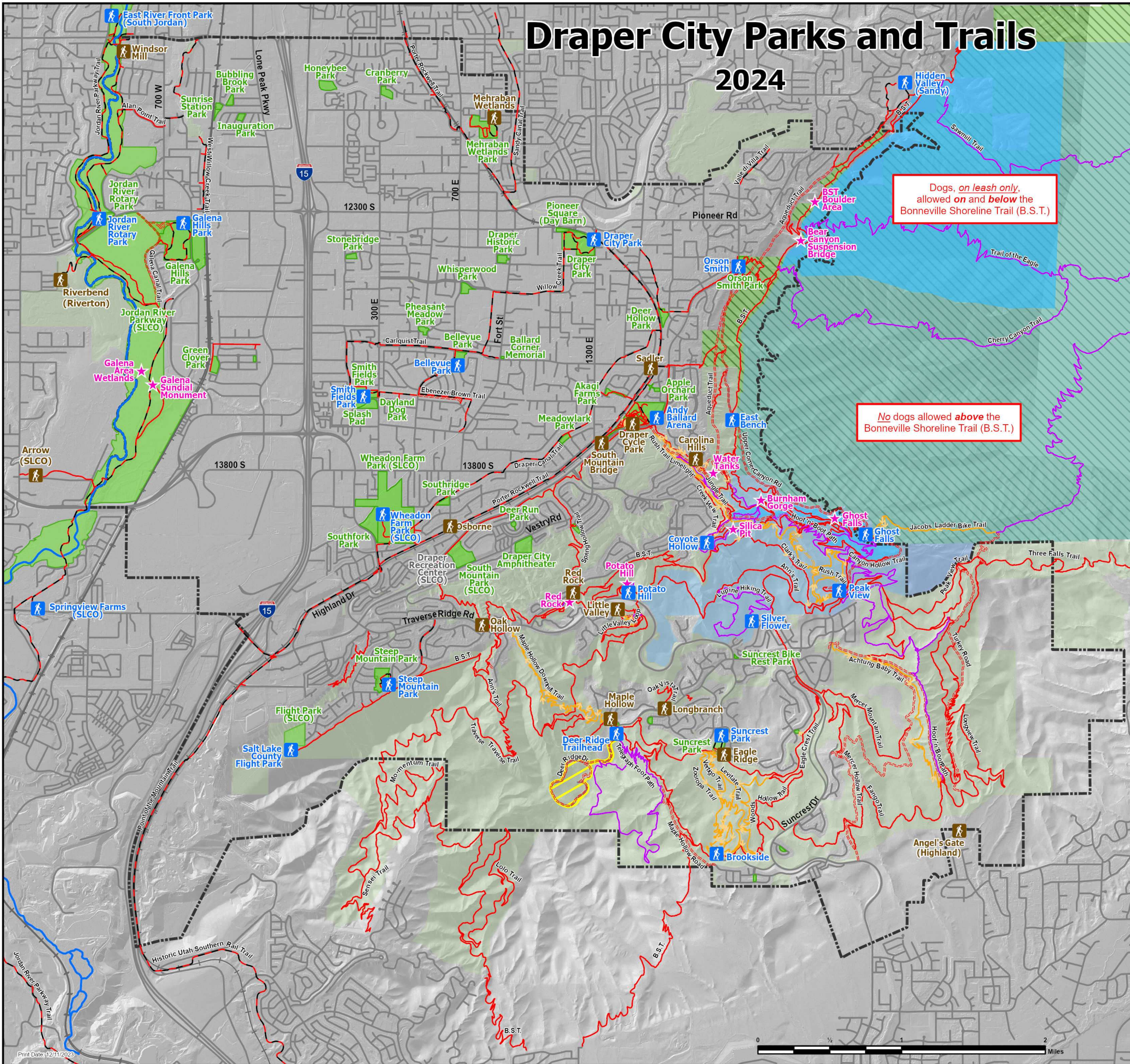


# Draper City Parks and Trails

## 2024



**PLEASE NOTE:**

Stay on the established trails.

Many trails are in a watershed area, please help preserve your drinking water. Practice "Leave No Trace" skills.

No motorized vehicles permitted on trails.

Domestic animals (dogs, horses) must be leashed in permitted areas. You must collect and properly dispose of all waste.

Camping and campfires are prohibited within Draper City open space.

Equestrian trailheads are located at the Andy Ballard Arena, Orson Smith Trailhead, and Peak View Trailhead.

Some trails are located in active construction areas, please use caution.

**Report all violations to Draper City Police at (801) 840-4000**

Dogs, on leash only, allowed on and below the Bonneville Shoreline Trail (B.S.T.)

No dogs allowed above the Bonneville Shoreline Trail (B.S.T.)

Humans and animals are prohibited from entering any and all water. Domestic animals are prohibited in watershed areas as designated. Dogs are prohibited in all protected watershed areas. In permitted areas, domestic animals must maintain a distance of 100 feet away from all water. Crossing is allowed on bridges only.



Visit [www.draperutah.gov](http://www.draperutah.gov) for an interactive map and detailed information.

### LEGEND

- Single Track
- Double Track
- Multi-Use
- Multi-Use (No Bikes Downhill)
- Foot Path
- Bikes Only (Downhill)
- Multi-Use Paved
- Point of Interest
- Trailhead
- Trailhead (With Restrooms)
- City Boundary
- Dog Off Leash Area
- Parks
- Open Space
- U.S. Forest Service
- Protected Watershed Area (No Dogs Allowed)
- Restriction Area (No Dogs or Horses Allowed)

